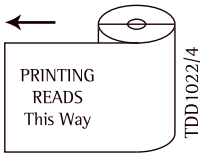




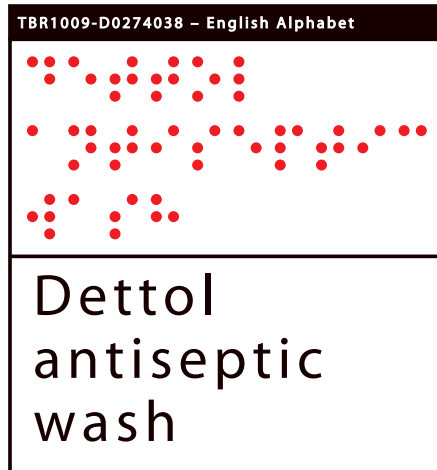
FRONT



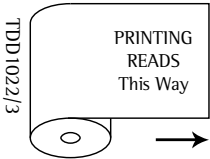
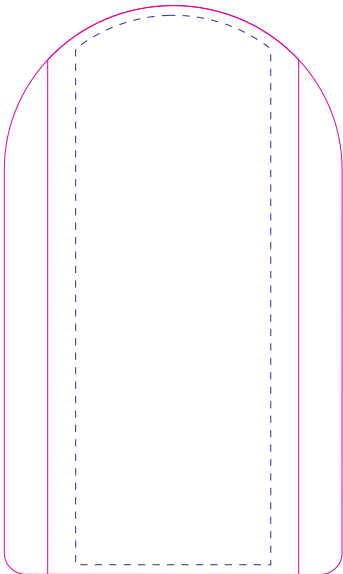
TBR1009-D0274038 - English Alphabet

Braille representation of the text 'Dettol antiseptic wash'.

Dettol
antiseptic
wash



CARRIER:







LEAFLET FACE:

burning, swelling and discolouration or reddening, local site reactions such as the skin splitting. If you suffer from eczema, use of this product may make it worse. If you experience any side effects after using this product, speak to your doctor or pharmacist. Reporting of side effects
If you get any side effects, talk to your doctor, pharmacist or nurse. This includes any possible side effects not listed in this leaflet. You can also report side effects directly via the Yellow Card

Scheme at: www.mhra.gov.uk/yellowcard. By reporting side effects you can help provide more information on the safety of this medicine.
HOW TO STORE THIS MEDICINE
Keep out of the sight and reach of children.
Store below 30°C
FURTHER INFORMATION
The medicine contains benzalkonium chloride (0.198% w/v), as an active substance and also propylene glycol, sodium acid

phosphate, water, sodium phosphate, mild pine perfume (contains d-limonene and linal), disodium edetate.
Licence holder:
Reckitt Benckiser Healthcare (UK) Limited, 103 - 105 Bath Road, Slough, SL1 3UH, UK.
Manufacturer:
Reckitt Benckiser Healthcare (UK) Ltd, Hull, HU87DS, UK
PL 00063/0765
This leaflet was last approved in TBC
e100ml
Dettol and the sword symbol are trade marks.

  
Dettol Antiseptic Wash
Antiseptic to wash out wounds. Helps prevent infection of minor skin wounds. Read the leaflet before use. For external use only.
Keep out of the sight and reach of children. Also contains propylene glycol, sodium acid phosphate, sodium phosphate, mild pine perfume (contains d-limonene and linal), disodium edetate, water
e100ml
PL 00063/0765

< 000000000 >
0000000
For leaflet peel here!

PAGE
6

PAGE
7

PAGE
8

PAGE
1

LEAFLET REVERSE:

Dettol Antiseptic Wash
Benzalkonium chloride 0.198% w/v
Dettol antiseptic wash is to be used for antiseptic cleansing of minor wound caused by cuts, skin grazes, insect stings and bites, small burns and scalds. It can get rid of a wide range of bacteria that could be associated with infection of minor wounds.
BEFORE USING THIS MEDICINE
Do not use this product:
- on infants under 12 months of age
- with soap or other surfactants as the active substance may be deactivated

- if you are allergic to any of the ingredients continuously or more than once in 24 hours
- with any other topical product on large injuries covering more than 5% of the body
- around the ears, eyes, mouth or on genitals after the expiry date.
This product contains 20.8 mg propylene glycol in each ml of antiseptic spray and may cause skin irritation. This product contains fragrance with d-limonene and

linal. d-Limonene and linal may cause allergic reactions. Dettol antiseptic wash is for direct use on the skin only. Do not inhale. Rinse the eyes with plenty of cold water in case of accidental contact.
PREGNANCY AND BREAST FEEDING
To avoid ingestion by a breast fed child, use on breasts during breast feeding is not advised. Please speak to a doctor or pharmacist before using this product if you are pregnant or breast feeding.

HOW TO USE THIS MEDICINE
For use on skin only. For adults and children: To be used once in any 24 hour period. Repeat as necessary every 24 hours for up to a maximum of 5 days. Spray directly onto the wound until it is visibly wet and clean and any dirt or debris has been washed away. If necessary, use a clean tissue or cotton wool to wipe up any excess liquid. Repeat as necessary.
SIDE EFFECTS
Reported side effects include skin itching, rashes, irritation,

PAGE
2

PAGE
3

PAGE
4

PAGE
5