

Leaflet revision date: 30 January 2025

Blind or partially sighted? Is this leaflet hard to see or read? Call 02036301310 or write to info@abacusmedicine.com to obtain the leaflet in a format suitable for you.

Ciproxin® is a registered trade mark of Bayer Intellectual Property GmbH, Germany.

Advice/medical education

Antibiotics are used to cure bacterial infections. They are ineffective against viral infections.

If your doctor has prescribed antibiotics, you need them precisely for your current illness.

Despite antibiotics, some bacteria may survive or grow. This phenomenon is called resistance: some antibiotic treatments become ineffective.

Misuse of antibiotics increases resistance. You may even help bacteria become resistant and therefore delay your cure or decrease antibiotic efficacy if you do not respect appropriate:

- dosages
- schedules
- duration of treatment

Consequently, to preserve the efficacy of this drug:

- 1- Use antibiotics only when prescribed.
- 2- Strictly follow the prescription.
- 3- Do not re-use an antibiotic without medical prescription, even if you want to treat a similar illness.
- 4- Never give your antibiotic to another person; maybe it is not adapted to her/his illness.
- 5- After completion of treatment, return all unused drugs to your chemist's shop to ensure they will be disposed of correctly

A1501 LEAFLET Ciproxin 20250130

A1501 LEAFLET Ciproxin 20250130

PACKAGE LEAFLET: INFORMATION FOR THE PATIENT

Ciproxin® 250 mg/5 mL granules and solvent for oral suspension (ciprofloxacin)

The name of your medicine is Ciproxin® 250 mg/5 mL granules and solvent for oral suspension but will be referred to as Ciproxin throughout the following leaflet.

Read all of this leaflet carefully before you start taking this medicine because it contains important information for you.

- Keep this leaflet. You may need to read it again.
- If you have any further questions, ask your doctor or pharmacist.
- This medicine has been prescribed for you only. Do not pass it on to others. It may harm them, even if their signs of illness are the same as yours.
- If you get any side effects, talk to your doctor or pharmacist. This includes any possible side effects not listed in this leaflet. See section 4.

What is in this leaflet

1. What Ciproxin is and what it is used for
2. What you need to know before you take Ciproxin
3. How to take Ciproxin
4. Possible side effects
5. How to store Ciproxin
6. Contents of the pack and other information

1. What Ciproxin is and what it is used for

Ciproxin contains the active substance ciprofloxacin. Ciprofloxacin is an antibiotic belonging to the fluoroquinolone family. Ciprofloxacin works by killing bacteria that cause infections. It only works with specific strains of bacteria.

Adults

Ciproxin is used in adults to treat the following bacterial infections:

- respiratory tract infections
- long lasting or recurring ear or sinus infections
- urinary tract infections
- genital tract infections in men and women
- gastro-intestinal tract infections and intra-abdominal infections
- skin and soft tissue infections
- bone and joint infections
- to prevent infections due to the bacterium *Neisseria meningitidis*
- anthrax inhalation exposure

Ciprofloxacin may be used in the management of patients with low white blood cell counts (neutropenia) who have a fever that is suspected to be due to a bacterial infection.

If you have a severe infection or one that is caused by more than one type of bacterium, you may be given additional antibiotic treatment in addition to Ciproxin.

Children and adolescents

Ciproxin is used in children and adolescents, under specialist medical supervision, to treat the following bacterial infections:

- lung and bronchial infections in children and adolescents suffering from cystic fibrosis
- complicated urinary tract infections, including infections that have reached the kidneys (pyelonephritis)
- anthrax inhalation exposure

Ciproxin may also be used to treat other specific severe infections in children and adolescents when your doctor considered this necessary.

2. What you need to know before you take Ciproxin

Do not take Ciproxin:

- if you are allergic to the active substance, to other quinolone drugs or to any of the other ingredients of this medicine (listed in Section 6)

- if you are taking tizanidine (see Section 2: Other medicines and Ciproxin)

Warnings and precautions

Before taking this medicine

You should not take fluoroquinolone/quinolone antibacterial medicines, including Ciproxin, if you have experienced any serious adverse reaction in the past when taking a quinolone or fluoroquinolone. In this situation, you should inform your doctor as soon as possible.

Talk to your doctor before taking Ciproxin

- if you have ever had kidney problems because your treatment may need to be adjusted.
- if you suffer from epilepsy or other neurological conditions.
- if you have a history of tendon problems during previous treatment with antibiotics such as Ciproxin.
- if you are diabetic because you may experience a risk of hypoglycaemia with ciprofloxacin.
- if you have myasthenia gravis (a type of muscle weakness) because symptoms can be exacerbated.
- if you have been diagnosed with an enlargement or "bulge" of a large blood vessel (aortic aneurysm or large vessel peripheral aneurysm).
- if you have experienced a previous episode of aortic dissection (a tear in the aorta wall).
- if you have been diagnosed with leaking heart valves (heart valve regurgitation).
- if you have a family history of aortic aneurysm or aortic dissection or congenital heart valve disease, or other risk factors or predisposing conditions (e.g. connective tissue disorders such as Marfan syndrome or Ehlers-Danlos syndrome, Turner syndrome, Sjögren's syndrome [an inflammatory autoimmune disease], or vascular disorders such as Takayasu arteritis, giant cell arteritis, Behcet's disease, high blood pressure, or known atherosclerosis, rheumatoid arthritis [a disease of the joints] or endocarditis [an infection of the heart]).
- if you have heart problems. Caution should be taken when using ciprofloxacin, if you were born with or have family history of prolonged QT interval (seen on ECG, electrical recording of the heart), have salt imbalance in the blood (especially low level of potassium or magnesium in the blood), have a very slow heart rhythm (called 'bradycardia'), have a weak heart (heart failure), have a history of heart attack (myocardial infarction), you are female or elderly or you are taking other medicines that result in abnormal ECG changes (see section 2: Other medicines and Ciproxin).
- if you or a member of your family is known to have a deficiency in glucose-6-phosphate dehydrogenase (G6PD), since you may experience a risk of anaemia with ciprofloxacin.

For the treatment of some genital tract infections, your doctor can prescribe another antibiotic in addition to ciprofloxacin. If there is no improvement in symptoms after 3 days of treatment, please consult your doctor.

While taking Ciproxin

Tell your doctor immediately, if any of the following occurs **while taking Ciproxin**. Your doctor will decide whether treatment with Ciproxin needs to be stopped.

- **Severe, sudden allergic reaction** (an anaphylactic reaction/shock, angio-oedema). Even with the first dose, there is a small chance that you may experience a severe allergic reaction with the following symptoms: tightness in the chest, feeling dizzy, sick or faint, or experiencing dizziness when standing up. **If this happens, stop taking Ciproxin and contact your doctor immediately.**
- **Prolonged, disabling and potentially irreversible serious side effects. Fluoroquinolone/ quinolone antibacterial medicines, including Ciproxin, have been associated with rare but serious side effects, some of them being long lasting (continuing for months or years), disabling or potentially irreversible.**

This includes tendon, muscle and joint pain of the upper and lower limbs, difficulty in walking, abnormal sensations such as pins and needles, tingling, tickling, numbness or burning (paraesthesia), sensory disorders including impairment of vision, taste and smell, and hearing, mental health effects which may include, but are not necessarily limited to, anxiety, panic attacks, confusion, or depression, memory impairment, severe fatigue, and severe sleep disorders. There are no medicines that have been established as being effective treatments for the symptoms of long lasting or disabling side effects associated with fluoroquinolones.

If you experience any of these side effects after taking Ciproxin, then do not take any further doses and contact your doctor immediately. You and your doctor will decide on whether to continue treatment, considering alternative options.

- You may experience psychiatric reactions when taking Ciproxin, including when taking it for the first time. If you suffer from depression or psychosis, your symptoms may become worse under treatment with Ciproxin. In rare cases, depression or psychosis can progress to thoughts of suicide or suicide attempts. If this happens, stop taking Ciproxin and contact your doctor immediately. You may not notice some changes in your mood and behaviour so it is very important to tell your friends and family that you are taking Ciproxin, and that there may be rare psychiatric side effects. Others may notice changes and help you quickly identify any symptoms that you need to talk to your doctor about.
- Pain and swelling in the joints and inflammation or rupture of tendons** may occur rarely. Your risk is increased if you are elderly (above 60 years of age) have received an organ transplant, have kidney problems or if you are being treated with corticosteroids. Inflammation and ruptures of tendons may occur within the first 48 hours of treatment and even up to several months after stopping of Ciproxin therapy. At the first sign of pain or inflammation of a tendon (for example in your ankle, wrist, elbow, shoulder or knee), stop taking Ciproxin, contact your doctor and rest the painful area. Avoid any unnecessary exercise, as this might increase the risk of a tendon rupture.
- If you feel **sudden, severe pain in your abdomen, chest or back, which can be symptoms of aortic aneurysm and dissection**, go immediately to an emergency room. Your risk may be increased if you are being treated with systemic corticosteroids.
- If you start experiencing a **rapid onset of shortness of breath**, especially when you lie down flat in your bed, or you notice **swelling of your ankles, feet or abdomen, or a new onset of heart palpitations** (sensation of rapid or irregular heartbeat), you should inform a doctor immediately.
- If you suffer from **epilepsy** or other **neurological conditions** such as cerebral ischemia or stroke, you may experience side effects associated with the central nervous system. If seizure happens, stop taking Ciproxin and contact your doctor immediately.
- You may rarely experience symptoms of **nerve damage (neuropathy)** such as pain, burning, tingling, numbness and/or weakness especially in the feet and legs or hands and arms. If this happens, stop taking Ciproxin and inform your doctor immediately in order to prevent the development of potentially irreversible condition.
- Quinolone antibiotics may cause an **increase of your blood sugar levels** above normal levels (hyperglycaemia), or **lowering of your blood sugar levels** below normal levels, potentially leading to loss of consciousness (hypoglycaemic coma) in severe cases (see section 4). This is important for people who have diabetes. If you suffer from diabetes, your blood sugar should be carefully monitored.
- Diarrhoea** may develop while you are taking antibiotics, including Ciproxin, or even several weeks after you have stopped taking them. If it becomes severe or persistent or you notice that your stool contains blood or mucus, stop taking Ciproxin and contact your doctor immediately, as this can be life-threatening. Do not take medicines that stop or slow down bowel movements.
- If your **eyesight becomes impaired** or if your eyes seem to be otherwise affected, consult an eye specialist immediately.

- Your skin becomes more **sensitive to sunlight or ultraviolet (UV) light** when taking Ciproxin. Avoid exposure to strong sunlight, or artificial UV light such as sunbeds.
 - Tell the doctor or laboratory staff that you are taking Ciproxin if you have to provide a **blood or urine sample**.
 - If you suffer from **kidney problems**, tell the doctor because your dose may need to be adjusted.
 - Ciproxin may cause **liver damage**. If you notice any symptoms such as loss of appetite, jaundice (yellowing of the skin), dark urine, itching, or tenderness of the stomach, contact your doctor immediately.
 - Ciproxin may cause a reduction in the number of white blood cells and your **resistance to infection may be decreased**. If you experience an infection with symptoms such as fever and serious deterioration of your general condition, or fever with local infection symptoms such as sore throat/pharynx/mouth or urinary problems you should see your doctor immediately. A blood test will be taken to check possible reduction of white blood cells (agranulocytosis).
- It is important to inform your doctor about your medicine.

Other medicines and Ciproxin

Tell your doctor or pharmacist if you are taking, have recently taken or might take any other medicines.

Do not take Ciproxin together with tizanidine, because this may cause side effects such as low blood pressure and sleepiness (see Section 2: Do not take Ciproxin).

The following medicines are known to interact with Ciproxin in your body. Taking Ciproxin together with these medicines can influence the therapeutic effect of those medicines. It can also increase the probability of experiencing side effects.

Tell your doctor if you are taking:

- Vitamin K antagonists (e.g. warfarin, acenocoumarol, phenprocoumon or fluidione) or other oral anti-coagulants (to thin the blood)
- probenecid (for gout)
- methotrexate (for certain types of cancer, psoriasis, rheumatoid arthritis)
- theophylline (for breathing problems)
- tizanidine (for muscle spasticity in multiple sclerosis)
- olanzapine (an antipsychotic)
- clozapine (an antipsychotic)
- ropinirole (for Parkinson's disease)
- phenytoin (for epilepsy)
- metoclopramide (for nausea and vomiting)
- cyclosporin (for skin conditions, rheumatoid arthritis and in organ transplantation)
- other medicines that can alter your heart rhythm: medicines that belong to the group of anti-arrhythmics (e.g. quinidine, hydroquinidine, disopyramide, amiodarone, sotalol, dofetilide, ibutilide), tricyclic antidepressants, some antimicrobials (that belong to the group of macrolides), some antipsychotics
- zolpidem (for sleep disorders)

Ciproxin may **increase** the levels of the following medicines in your blood:

- pentoxifylline (for circulatory disorders)
- caffeine
- duloxetine (for depression, diabetic nerve damage or incontinence)
- lidocaine (for heart conditions or anaesthetic use)
- sildenafil (e.g. for erectile dysfunction)
- agomelatine (for depression)

Some medicines **reduce** the effect of Ciproxin. Tell your doctor if you take or wish to take:

- antacids
- omeprazole
- mineral supplements
- sucralfate
- a polymeric phosphate binder (e.g. sevelamer or lanthanum carbonate)

- medicines or supplements containing calcium, magnesium, aluminium or iron

If these preparations are essential, take Ciproxin about two hours before or no sooner than four hours after them.

Ciproxin with food and drink

Any calcium taken as part of a meal, including food and drink rich on calcium (such as milk or yoghurt) or fortified fruit-juices (e.g. orange juice containing added calcium), will not seriously affect the effect of this drug. However, ciprofloxacin oral suspension administered concurrently with food and drinks rich on calcium when these dairy products or drinks are taken alone outside meals, may reduce the effect of this drug. Nevertheless, ciprofloxacin oral suspension could also be administered before or after dairy products or mineral-fortified drinks taken alone outside meals. In such case, see section 3 on the precise mode of intake.

Pregnancy and breast-feeding

If you are pregnant or breast-feeding, think you may be pregnant or are planning to have a baby, ask your doctor or pharmacist for advice before taking this medicine.

It is not recommended to take Ciproxin oral suspension during pregnancy.

Do not take Ciproxin during breast-feeding because ciprofloxacin is excreted in breast milk and can be harmful for your child.

Driving and using machines

Ciproxin may make you feel less alert. Some neurological adverse events can occur. Therefore, make sure you know how you react to Ciproxin before driving a vehicle or operating machinery. If in doubt, talk to your doctor.

Ciproxin contains benzyl alcohol

This medicine contains 19.6 mg benzyl alcohol in each bottle which is equivalent to 19.6 mg/100 ml. Benzyl alcohol may cause allergic reactions.

Benzyl alcohol has been linked with the risk of severe side effects including breathing problems (called "gasping syndrome") in young children. Do not use for more than a week in young children (less than 3 years old), unless advised by your doctor or pharmacist.

It is not recommended to take this medicine if you are pregnant or breast-feeding (see Pregnancy and breast-feeding).

Ask your doctor or pharmacist for advice if you have a liver or kidney disease. This is because large amounts of benzyl alcohol can build-up in your body and may cause side effects (called "metabolic acidosis" or "abnormal respiration").

Ciproxin contains sucrose

If you have been told by your doctor that you have an intolerance to some sugars, please consult your doctor before taking Ciproxin 250 mg/5 mL granules and solvent for oral suspension. As Ciproxin contains 1.4 g sucrose per 5-mL measuring spoonful, this has to be taken into account in patients with diabetes mellitus. This product can be harmful to the teeth.

3. How to take Ciproxin

Your doctor will explain to you exactly how much Ciproxin you will have to take as well as how often and for how long. This will depend on the type of infection you have and how bad it is.

Always take this medicine exactly as your doctor has told you. Check with your doctor or pharmacist if you are not sure how to take Ciproxin.

- To prepare the oral suspension (see the sub-section "Preparing and taking the suspension");
- Use the measuring spoon provided with the bottle.

Dosage

Adults

The usual recommended posology of Ciproxin is 250 mg to 750 mg twice daily (every 12 hours) depending on the severity and type of infection:

- 1 measuring spoonful equals to 250 mg
- 2 measuring spoonfuls equals to 500 mg
- 3 measuring spoonfuls equals to 750 mg (max dose per intake).

Children and adolescents

The doctor will calculate the correct dose for your child depending on his or her body weight, the severity and type of infection.

Doses are worked out depending on the child's body weight in kilograms (kg).

The usual recommended dose is 10 mg to 20 mg for each kilogram of bodyweight per intake, and each dose will be taken twice daily (every 12 hours). The maximum recommended dose is 750 mg per intake.

A practical guidance with reference numbers of spoonfuls for each of the two daily administrations of Ciproxin oral suspension per recommended dose in mg/kg bodyweight is given in the table below:

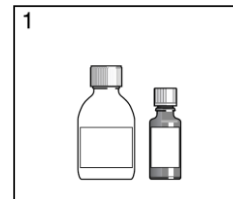
250 mg/5 mL oral suspension		
½ spoon = 125 mg ;		
1 spoon = 250 mg ;		
1 spoon + ½ spoon = 375 mg ;		
2 spoons = 500 mg ;		
2 spoons + ½ spoon = 625 mg ;		
3 spoons = 750 mg (max dose)		
Practical guidance for each of the two daily administrations of Ciproxin oral suspension per recommended dose in mg/kg bodyweight		
Body weight (kg)	10 mg/kg	20 mg/kg
9-15 kg	½ spoon	1 spoon
16-20 kg	1 spoon	1 spoon + ½ spoon
21-25 kg	1 spoon	2 spoons
26-28 kg	1 spoon	2 spoons + ½ spoon
29-31 kg	1 spoon + ½ spoon	2 spoons + ½ spoon
32-40 kg	1 spoon + ½ spoon	3 spoons
41-51 kg	2 spoons	3 spoons
52-61 kg	2 spoons + ½ spoon	3 spoons
62 kg and above	3 spoons	3 spoons

Kidney problems

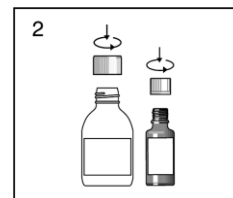
Tell your doctor if you suffer from kidney problems because your dose may need to be adjusted.

Preparing and taking the suspension

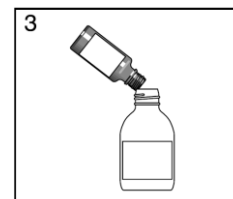
Use only after reconstitution: the small brown bottle contains granules of ciprofloxacin. Add them to the solvent in the larger white bottle



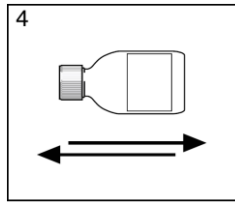
- The product comes in 2 bottles, a small brown bottle and a larger white bottle. The small brown bottle contains granules which you add to the solvent in the larger white bottle.



- Open both bottles. Press down the child-proof cap and turn it to the left.



- Empty the small brown bottle containing the granules into the opening of the larger white bottle with the solvent. Do not add any water to the solvent. Discard the empty small brown bottle.



4. Close the white bottle with the solvent and added granules, turn it on its side and shake vigorously for about 15 seconds.

5. Shake it vigorously for about 15 seconds before each dose.
6. Enter the expiry date after reconstitution (= reconstitution date + 14 days) in the relevant field on the white solvent bottle. The reconstituted suspension is stable for no more than 14 days even when stored in a refrigerator
7. Do try to take the suspension at around the same time every day.
8. Always use the measuring spoon provided. The full spoon will give you a dose of 250 mg Ciproxin.
9. Do not chew the granules present in the suspension, simply swallow them
10. A glass of water may be taken after taking the dose.
11. You can take the suspension at mealtimes or in between meals. You can take ciprofloxacin oral suspension during meals containing dairy products (such as milk or yoghurt) or with fortified fruit juices (e.g. calcium-fortified orange juice). However, **do not** take Ciproxin with dairy products (such as milk or yoghurt) or with fortified fruit-juice (e.g. calcium-fortified orange-juice) when these dairy products or fortified fruit juices are taken alone outside meals.
Nevertheless, ciprofloxacin oral suspension could be administered one to two hours before or no sooner than four hours after dairy products or mineral-fortified drinks taken alone outside meals.

Remember to drink plenty of fluids while you are taking this medicine.

After use the graduated measuring spoon should be cleaned under running water with dishwashing detergent, rinsed with water and dried thoroughly afterwards with a clean paper towel. The spoon should be stored with the Ciproxin 250 mg/5 mL oral suspension bottle in the outer carton.

If you take more Ciproxin than you should

If you take more than the prescribed dose, get medical help immediately. If possible, take the oral suspension or the box with you to show the doctor.

If you forget to take Ciproxin

If you forget to take Ciproxin and it is:

- 6 hours or more until your next scheduled dose, take your missed dose right away. Then take the next dose at your regular time.
- less than 6 hours until your next scheduled dose, do not take the missed dose. Take the next dose at your regular time.

Do not take a double dose to make up for a forgotten dose. Be sure to complete your course of treatment.

If you stop taking Ciproxin

It is important that you **finish the course of treatment** even if you begin to feel better after a few days. If you stop taking this medicine too soon, your infection may not be completely cured and the symptoms of the infection may return or get worse. You might also develop resistance to the antibiotic.

If you have any further questions about the use of this medicine, ask your doctor or pharmacist.

4. Possible side effects

Like all medicines, this medicine can cause side effects, although not everybody gets them.

The following section contains the most serious side effects that you can recognize yourself:

Stop taking Ciproxin and contact your doctor immediately in order to consider another antibiotic treatment if you notice any of the following serious side effects:

Rare (may affect up to 1 in 1,000 people)

- Seizure (see Section 2: Warnings and precautions)

Very rare (may affect up to 1 in 10,000 people)

- Severe, sudden allergic reaction with symptoms such as tightness in the chest, feeling dizzy, sick or faint, or experience dizziness when standing up (anaphylactic reaction/shock) (see Section 2: Warnings and precautions)
- Muscle weakness, inflammation of the tendons which could lead to rupture of the tendon, particularly affecting the large tendon at the back of the ankle (Achilles tendon) (see Section 2: Warnings and precautions)
- A serious life-threatening skin rash, usually in the form of blisters or ulcers in the mouth, throat, nose, eyes and other mucous membranes such as genitals which may progress to widespread blistering or peeling of the skin (Stevens-Johnson syndrome, toxic epidermal necrolysis).

Not known (frequency cannot be estimated from the available data)

- Unusual feelings of pain, burning tingling, numbness or muscle weakness in the extremities (neuropathy) (see Section 2: Warnings and precautions)
- A drug reaction that causes rash, fever, inflammation of internal organs, hematologic abnormalities and systemic illness (DRESS Drug Reaction with Eosinophilia and Systemic Symptoms, AGEP Acute Generalised Exanthematous Pustulosis).

Other side effects which have been observed during treatment with Ciproxin are listed below by how likely they are:

Common (may affect up to 1 in 10 people)

- nausea, diarrhoea
- joint pain and joint inflammation in children

Uncommon (may affect up to 1 in 100 people)

- joint pain in adults
- fungal superinfections
- a high concentration of eosinophils, a type of white blood cell
- decreased appetite
- hyperactivity or agitation
- headache, dizziness, sleeping problems, or taste disorders
- vomiting, abdominal pain, digestive problems such as stomach upset (indigestion/heartburn), or wind
- increased amounts of certain substances in the blood (transaminases and/or bilirubin)
- rash, itching, or hives
- poor kidney function
- pains in your muscles and bones, feeling unwell (asthenia), or fever
- increase in blood alkaline phosphatase (a certain substance in the blood)

Rare (may affect up to 1 in 1,000 people)

- Cases of long lasting (up to months or years) or permanent adverse drug reactions have been associated with quinolone and fluoroquinolone antibiotics. These may include tendon inflammation, tendon rupture, joint pain, pain in the limbs, difficulty in walking, abnormal sensations such as pins and needles, tingling, pricking, burning, numbness or pain (neuropathy), fatigue, sleep disorders, memory impairment, mental health effects which may include, but are not necessarily limited to, anxiety, panic attacks, confusion, or depression, as well as impairment of hearing, vision, and taste and smell. There are no medicines that have been established as being effective treatments for the symptoms of long lasting or disabling side effects associated with fluoroquinolones.
- muscle pain, inflammation of the joints, increased muscle tone and cramping
- inflammation of the bowel (colitis) linked to antibiotic use (can be fatal in very rare cases) (see Section 2: Warnings and precautions)
- changes to the blood count (leukopenia, leukocytosis, neutropenia, anaemia), increased or decreased amounts of a blood clotting factor (thrombocytes)
- allergic reaction, swelling (oedema), or rapid swelling of the skin and mucous membranes (angio-oedema) (see Section 2: Warnings and precautions)

- increased blood sugar (hyperglycaemia)
- decreased blood sugar (hypoglycaemia) (see Section 2: Warnings and precautions)
- confusion, disorientation, anxiety reactions, strange dreams, depression (potentially leading to thoughts of suicide, suicide attempts, or completed suicide) (see Section 2: Warnings and precautions), or hallucinations
- pins and needles, unusual sensitivity to stimuli of the senses, decreased skin sensitivity, tremors, or giddiness
- eyesight problems including double vision (see Section 2: Warnings and precautions)
- tinnitus, loss of hearing, impaired hearing
- rapid heartbeat (tachycardia)
- expansion of blood vessels (vasodilation), low blood pressure, or fainting
- shortness of breath, including asthmatic symptoms
- liver disorders, jaundice (cholestatic icterus), or hepatitis
- sensitivity to light (see Section 2: Warnings and precautions)
- kidney failure, blood or crystals in the urine, urinary tract inflammation
- fluid retention or excessive sweating
- increased levels of the enzyme amylase

Very rare (may affect up to 1 in 10,000 people)

- a special type of reduced red blood cell count (haemolytic anaemia); a dangerous drop in a type of white blood cells (agranulocytosis) (see Section 2: Warnings and precautions); a drop in the number of red and white blood cells and platelets (pancytopenia), which may be fatal; and bone marrow depression, which may also be fatal
- allergic reaction called serum sickness-like reaction (see Section 2: Warnings and precautions)
- mental disturbances (psychotic reactions potentially leading to thoughts of suicide, suicide attempts, or completed suicide) (see Section 2: Warnings and precautions)
- migraine, disturbed coordination, unsteady walk (gait disturbance), disorder of sense of smell (olfactory disorders), pressure on the brain (intracranial pressure and pseudotumor cerebri)
- visual colour distortions
- inflammation of the wall of the blood vessels (vasculitis)
- pancreatitis
- death of liver cells (liver necrosis) very rarely leading to life-threatening liver failure (see Section 2: Warnings and precautions)
- small, pin-point bleeding under the skin (petechiae); various skin eruptions or rashes
- worsening of the symptoms of myasthenia gravis (see Section 2: Warnings and precautions)

Not known (frequency cannot be estimated from the available data)

- syndrome associated with impaired water excretion and low levels of sodium (SIADH)
- feeling highly excited (mania) or feeling great optimism and overactivity (hypomania)
- abnormal fast heart rhythm, life-threatening irregular heart rhythm, alteration of the heart rhythm (called 'prolongation of QT interval', seen on ECG, electrical activity of the heart)
- influence on blood clotting (in patients treated with Vitamin K antagonists)
- loss of consciousness due to severe decrease in blood sugar levels (hypoglycaemic coma). See section 2.

Cases of an enlargement and weakening of the aortic wall or a tear in the aortic wall (aneurysms and dissections), which may rupture and may be fatal, and of leaking heart valves have been reported in patients receiving fluoroquinolones. See also section 2.

Reporting of side effects

If you get any side effects, talk to your doctor or pharmacist. This includes any possible side effects not listed in this leaflet. You can also report side effects directly via the Yellow Card Scheme at: www.mhra.gov.uk/yellowcard or search for MHRA Yellow Card in the **Google Play** or **Apple App Store**. By reporting side effects, you can help provide more information on the safety of this medicine.

5. How to store Ciproxin

KEEP OUT OF THE SIGHT AND REACH OF CHILDREN.

Do not use this medicine after the expiry date, which is stated on the carton and bottles after "EXP": The expiry date refers to the last day of that month.

Granules:

Do not store above 25 °C.

Solvent:

Do not store above 25 °C.

Protect from freezing. Avoid inverted storage.

When reconstituted, the ready-to-use oral suspension is stable only for 14 days when stored either at ambient temperatures up to 30 °C or in a refrigerator (2 °C - 8 °C). After this time, the reconstituted oral suspension should not be taken. Protect the reconstituted oral suspension from freezing.

Do not throw away any medicines via wastewater or household waste. Ask your pharmacist how to throw away medicines you no longer use. These measures will help protect the environment.

6. Contents of the pack and other information

What Ciproxin contains

The active substance is ciprofloxacin.

1 measuring spoonful (approx 5.0 mL suspension) provides approx. 250 mg ciprofloxacin.

1/2 measuring spoonful (approx 2.5 mL suspension) provides approx. 125 mg ciprofloxacin.

The other ingredients are:

Granules: hypromellose, magnesium stearate, polyacrylate dispersion 30 %, polysorbate 20, povidone.

Solvent: Soya lecithin, medium chain triglycerides, strawberry flavour (contains benzyl alcohol), sucrose, purified water.

What Ciproxin looks like and contents of the pack

Granules and solvent for oral suspension.

One amber glass bottle containing 7.95 g white to slightly yellow granules and one white HDPE bottle containing 93 ml of strawberry flavoured white to slightly yellow solvent. The pack is provided with a blue plastic graduated measuring spoon.

Product Licence holder

Procured from within the EU and repackaged by the Product Licence holder: Abacus Medicine Ltd., Abbey House, 282 Farnborough Road, Farnborough, GU14 7NA, United Kingdom.

Manufacturer

This product is manufactured by Bayer HealthCare Manufacturing S.r.l., Via delle Groane, 126, Garbagnate Milanese, Milano, Italy.

Leaflet revision date: 30 January 2025

Blind or partially sighted? Is this leaflet hard to see or read? Call 02036301310 or write to info@abacusmedicine.com to obtain the leaflet in a format suitable for you.

Advice/medical education

Antibiotics are used to cure bacterial infections. They are ineffective against viral infections.

If your doctor has prescribed antibiotics, you need them precisely for your current illness.

Despite antibiotics, some bacteria may survive or grow. This phenomenon is called resistance: some antibiotic treatments become ineffective.

Misuse of antibiotics increases resistance. You may even help bacteria become resistant and therefore delay your cure or decrease antibiotic efficacy if you do not respect appropriate:

- dosages
- schedules
- duration of treatment

Consequently, to preserve the efficacy of this drug:

- 1- Use antibiotics only when prescribed.
- 2- Strictly follow the prescription.
- 3- Do not re-use an antibiotic without medical prescription, even if you want to treat a similar illness.
- 4- Never give your antibiotic to another person; maybe it is not adapted to her/his illness.
- 5- After completion of treatment, return all unused drugs to your chemist's shop to ensure they will be disposed of correctly

A1501 LEAFLET Ciprofloxacin 20250130

A1501 LEAFLET Ciprofloxacin 20250130

PACKAGE LEAFLET: INFORMATION FOR THE PATIENT

Ciprofloxacin 250 mg/5 mL granules and solvent for oral suspension

The name of your medicine is Ciprofloxacin 250 mg/5 mL granules and solvent for oral suspension but will be referred to as Ciprofloxacin throughout the following leaflet.

Read all of this leaflet carefully before you start taking this medicine because it contains important information for you.

- Keep this leaflet. You may need to read it again.
- If you have any further questions, ask your doctor or pharmacist.
- This medicine has been prescribed for you only. Do not pass it on to others. It may harm them, even if their signs of illness are the same as yours.
- If you get any side effects, talk to your doctor or pharmacist. This includes any possible side effects not listed in this leaflet. See section 4.

What is in this leaflet

1. What Ciprofloxacin is and what it is used for
2. What you need to know before you take Ciprofloxacin
3. How to take Ciprofloxacin
4. Possible side effects
5. How to store Ciprofloxacin
6. Contents of the pack and other information

1. What Ciprofloxacin is and what it is used for

Ciprofloxacin contains the active substance ciprofloxacin. Ciprofloxacin is an antibiotic belonging to the fluoroquinolone family. Ciprofloxacin works by killing bacteria that cause infections. It only works with specific strains of bacteria.

Adults

Ciprofloxacin is used in adults to treat the following bacterial infections:

- respiratory tract infections
- long lasting or recurring ear or sinus infections
- urinary tract infections
- genital tract infections in men and women
- gastro-intestinal tract infections and intra-abdominal infections
- skin and soft tissue infections
- bone and joint infections
- to prevent infections due to the bacterium *Neisseria meningitidis*
- anthrax inhalation exposure

Ciprofloxacin may be used in the management of patients with low white blood cell counts (neutropenia) who have a fever that is suspected to be due to a bacterial infection.

If you have a severe infection or one that is caused by more than one type of bacterium, you may be given additional antibiotic treatment in addition to Ciprofloxacin.

Children and adolescents

Ciprofloxacin is used in children and adolescents, under specialist medical supervision, to treat the following bacterial infections:

- lung and bronchial infections in children and adolescents suffering from cystic fibrosis
- complicated urinary tract infections, including infections that have reached the kidneys (pyelonephritis)
- anthrax inhalation exposure

Ciprofloxacin may also be used to treat other specific severe infections in children and adolescents when your doctor considered this necessary.

2. What you need to know before you take Ciprofloxacin

Do not take Ciprofloxacin:

- if you are allergic to the active substance, to other quinolone drugs or to any of the other ingredients of this medicine (listed in Section 6)

- if you are taking tizanidine (see Section 2: Other medicines and Ciprofloxacin)

Warnings and precautions

Before taking this medicine

You should not take fluoroquinolone/quinolone antibacterial medicines, including Ciprofloxacin, if you have experienced any serious adverse reaction in the past when taking a quinolone or fluoroquinolone. In this situation, you should inform your doctor as soon as possible.

Talk to your doctor before taking Ciprofloxacin

- if you have ever had kidney problems because your treatment may need to be adjusted.
- if you suffer from epilepsy or other neurological conditions.
- if you have a history of tendon problems during previous treatment with antibiotics such as Ciprofloxacin.
- if you are diabetic because you may experience a risk of hypoglycaemia with ciprofloxacin.
- if you have myasthenia gravis (a type of muscle weakness) because symptoms can be exacerbated.
- if you have been diagnosed with an enlargement or “bulge” of a large blood vessel (aortic aneurysm or large vessel peripheral aneurysm).
- if you have experienced a previous episode of aortic dissection (a tear in the aorta wall).
- if you have been diagnosed with leaking heart valves (heart valve regurgitation).
- if you have a family history of aortic aneurysm or aortic dissection or congenital heart valve disease, or other risk factors or predisposing conditions (e.g. connective tissue disorders such as Marfan syndrome or Ehlers-Danlos syndrome, Turner syndrome, Sjögren’s syndrome [an inflammatory autoimmune disease], or vascular disorders such as Takayasu arteritis, giant cell arteritis, Behcet’s disease, high blood pressure, or known atherosclerosis, rheumatoid arthritis [a disease of the joints] or endocarditis [an infection of the heart]).
- if you have heart problems. Caution should be taken when using ciprofloxacin, if you were born with or have family history of prolonged QT interval (seen on ECG, electrical recording of the heart), have salt imbalance in the blood (especially low level of potassium or magnesium in the blood), have a very slow heart rhythm (called ‘bradycardia’), have a weak heart (heart failure), have a history of heart attack (myocardial infarction), you are female or elderly or you are taking other medicines that result in abnormal ECG changes (see section 2: Other medicines and Ciprofloxacin).
- if you or a member of your family is known to have a deficiency in glucose-6-phosphate dehydrogenase (G6PD), since you may experience a risk of anaemia with ciprofloxacin.

For the treatment of some genital tract infections, your doctor can prescribe another antibiotic in addition to ciprofloxacin. If there is no improvement in symptoms after 3 days of treatment, please consult your doctor.

While taking Ciprofloxacin

Tell your doctor immediately, if any of the following occurs **while taking Ciprofloxacin**. Your doctor will decide whether treatment with Ciprofloxacin needs to be stopped.

- **Severe, sudden allergic reaction** (an anaphylactic reaction/shock, angio-oedema). Even with the first dose, there is a small chance that you may experience a severe allergic reaction with the following symptoms: tightness in the chest, feeling dizzy, sick or faint, or experiencing dizziness when standing up. **If this happens, stop taking Ciprofloxacin and contact your doctor immediately.**
- **Prolonged, disabling and potentially irreversible serious side effects. Fluoroquinolone/ quinolone antibacterial medicines, including Ciprofloxacin, have been associated with very rare but serious side effects, some of them being long lasting (continuing months or years), disabling or potentially irreversible.**

This includes tendon, muscle and joint pain of the upper and lower limbs, difficulty in walking, abnormal sensations such as pins and needles, tingling, tickling, numbness or burning (paraesthesia), sensory disorders including impairment of vision, taste and smell, and hearing, mental health effects which may include, but are not necessarily limited to, anxiety, panic attacks, confusion, or depression, memory impairment, severe fatigue, and severe sleep disorders. There are no medicines that have been established as being effective treatments for the symptoms of long lasting or disabling side effects associated with fluoroquinolones.

If you experience any of these side effects after taking Ciprofloxacin, then do not take any further doses and contact your doctor immediately. You and your doctor will decide on whether to continue treatment, considering alternative options.

- You may experience psychiatric reactions when taking Ciprofloxacin, including when taking it for the first time. If you suffer from depression or psychosis, your symptoms may become worse under treatment with Ciprofloxacin. In rare cases, depression or psychosis can progress to thoughts of suicide or suicide attempts. If this happens, stop taking Ciprofloxacin and contact your doctor immediately. You may not notice some changes in your mood and behaviour so it is very important to tell your friends and family that you are taking Ciprofloxacin, and that there may be rare psychiatric side effects. Others may notice changes and help you quickly identify any symptoms that you need to talk to your doctor about.
- Pain and swelling in the joints and inflammation or rupture of tendons** may occur rarely. Your risk is increased if you are elderly (above 60 years of age) have received an organ transplant, have kidney problems or if you are being treated with corticosteroids. Inflammation and ruptures of tendons may occur within the first 48 hours of treatment and even up to several months after stopping of Ciprofloxacin therapy. At the first sign of pain or inflammation of a tendon (for example in your ankle, wrist, elbow, shoulder or knee), stop taking Ciprofloxacin, contact your doctor and rest the painful area. Avoid any unnecessary exercise, as this might increase the risk of a tendon rupture.
- If you feel **sudden, severe pain in your abdomen, chest or back, which can be symptoms of aortic aneurysm and dissection**, go immediately to an emergency room. Your risk may be increased if you are being treated with systemic corticosteroids.
- If you start **experiencing a rapid onset of shortness of breath**, especially when you lie down flat in your bed, or you notice **swelling of your ankles, feet or abdomen, or a new onset of heart palpitations** (sensation of rapid or irregular heartbeat), you should inform a doctor immediately.
- If you suffer from **epilepsy** or other **neurological conditions** such as cerebral ischemia or stroke, you may experience side effects associated with the central nervous system. If seizure happens, stop taking Ciprofloxacin and contact your doctor immediately.
- You may rarely experience symptoms of **nerve damage (neuropathy)** such as pain, burning, tingling, numbness and/or weakness especially in the feet and legs or hands and arms. If this happens, stop taking Ciprofloxacin and inform your doctor immediately in order to prevent the development of potentially irreversible condition.
- Quinolone antibiotics may cause an **increase of your blood sugar levels** above normal levels (hyperglycaemia), or **lowering of your blood sugar levels** below normal levels, potentially leading to loss of consciousness (hypoglycaemic coma) in severe cases (see section 4). This is important for people who have diabetes. If you suffer from diabetes, your blood sugar should be carefully monitored.
- Diarrhoea** may develop while you are taking antibiotics, including Ciprofloxacin, or even several weeks after you have stopped taking them. If it becomes severe or persistent or you notice that your stool contains blood or mucus, stop taking Ciprofloxacin and contact your doctor immediately, as this can be life-threatening. Do not take medicines that stop or slow down bowel movements.
- If your **eyesight becomes impaired** or if your eyes seem to be otherwise affected, consult an eye specialist immediately.

- Your skin becomes more **sensitive to sunlight or ultraviolet (UV) light** when taking Ciprofloxacin. Avoid exposure to strong sunlight, or artificial UV light such as sunbeds.
- Tell the doctor or laboratory staff that you are taking Ciprofloxacin if you have to provide a **blood or urine sample**.
- If you suffer from **kidney problems**, tell the doctor because your dose may need to be adjusted.
- Ciprofloxacin may cause **liver damage**. If you notice any symptoms such as loss of appetite, jaundice (yellowing of the skin), dark urine, itching, or tenderness of the stomach, contact your doctor immediately.
- Ciprofloxacin may cause a reduction in the number of white blood cells and your **resistance to infection may be decreased**. If you experience an infection with symptoms such as fever and serious deterioration of your general condition, or fever with local infection symptoms such as sore throat/pharynx/mouth or urinary problems you should see your doctor immediately. A blood test will be taken to check possible reduction of white blood cells (agranulocytosis).
It is important to inform your doctor about your medicine.

Other medicines and Ciprofloxacin

Tell your doctor or pharmacist if you are taking, have recently taken or might take any other medicines.

Do not take Ciprofloxacin together with tizanidine, because this may cause side effects such as low blood pressure and sleepiness (see Section 2: Do not take Ciprofloxacin).

The following medicines are known to interact with Ciprofloxacin in your body. Taking Ciprofloxacin together with these medicines can influence the therapeutic effect of those medicines. It can also increase the probability of experiencing side effects.

Tell your doctor if you are taking:

- Vitamin K antagonists (e.g. warfarin, acenocoumarol, phenprocoumon or fluindione) or other oral anti-coagulants (to thin the blood)
- probenecid (for gout)
- methotrexate (for certain types of cancer, psoriasis, rheumatoid arthritis)
- theophylline (for breathing problems)
- tizanidine (for muscle spasticity in multiple sclerosis)
- olanzapine (an antipsychotic)
- clozapine (an antipsychotic)
- ropinirole (for Parkinson’s disease)
- phenytoin (for epilepsy)
- metoclopramide (for nausea and vomiting)
- cyclosporin (for skin conditions, rheumatoid arthritis and in organ transplantation)
- other medicines that can alter your heart rhythm: medicines that belong to the group of anti-arrhythmics (e.g. quinidine, hydroquinidine, disopyramide, amiodarone, sotalol, dofetilide, ibutilide), tricyclic antidepressants, some antimicrobials (that belong to the group of macrolides), some antipsychotics
- zolpidem (for sleep disorders)

Ciprofloxacin may **increase** the levels of the following medicines in your blood:

- pentoxifylline (for circulatory disorders)
- caffeine
- duloxetine (for depression, diabetic nerve damage or incontinence)
- lidocaine (for heart conditions or anaesthetic use)
- sildenafil (e.g. for erectile dysfunction)
- agomelatine (for depression)

Some medicines **reduce** the effect of Ciprofloxacin. Tell your doctor if you take or wish to take:

- antacids
- omeprazole
- mineral supplements
- sucralfate
- a polymeric phosphate binder (e.g. sevelamer or lanthanum carbonate)

- medicines or supplements containing calcium, magnesium, aluminium or iron

If these preparations are essential, take Ciprofloxacin about two hours before or no sooner than four hours after them.

Ciprofloxacin with food and drink

Any calcium taken as part of a meal, including food and drink rich on calcium (such as milk or yoghurt) or fortified fruit-juices (e.g. orange juice containing added calcium), will not seriously affect the effect of this drug. However, ciprofloxacin oral suspension administered concurrently with food and drinks rich on calcium when these dairy products or drinks are taken alone outside meals, may reduce the effect of this drug. Nevertheless, ciprofloxacin oral suspension could also be administered before or after dairy products or mineral-fortified drinks taken alone outside meals. In such case, see section 3 on the precise mode of intake.

Pregnancy and breast-feeding

If you are pregnant or breast-feeding, think you may be pregnant or are planning to have a baby, ask your doctor or pharmacist for advice before taking this medicine.

It is not recommended to take Ciprofloxacin oral suspension during pregnancy.

Do not take Ciprofloxacin during breast-feeding because ciprofloxacin is excreted in breast milk and can be harmful for your child.

Driving and using machines

Ciprofloxacin may make you feel less alert. Some neurological adverse events can occur. Therefore, make sure you know how you react to Ciprofloxacin before driving a vehicle or operating machinery. If in doubt, talk to your doctor.

Ciprofloxacin contains benzyl alcohol

This medicine contains 19.6 mg benzyl alcohol in each bottle which is equivalent to 19.6 mg/100 ml. Benzyl alcohol may cause allergic reactions.

Benzyl alcohol has been linked with the risk of severe side effects including breathing problems (called “gasping syndrome”) in young children. Do not use for more than a week in young children (less than 3 years old), unless advised by your doctor or pharmacist.

It is not recommended to take this medicine if you are pregnant or breast-feeding (see Pregnancy and breast-feeding).

Ask your doctor or pharmacist for advice if you have a liver or kidney disease. This is because large amounts of benzyl alcohol can build-up in your body and may cause side effects (called “metabolic acidosis” or “abnormal respiration”).

Ciprofloxacin contains sucrose

If you have been told by your doctor that you have an intolerance to some sugars, please consult your doctor before taking Ciprofloxacin 250 mg/5 mL granules and solvent for oral suspension. As Ciprofloxacin contains 1.4 g sucrose per 5-mL measuring spoonful, this has to be taken into account in patients with diabetes mellitus. This product can be harmful to the teeth.

3. How to take Ciprofloxacin

Your doctor will explain to you exactly how much Ciprofloxacin you will have to take as well as how often and for how long. This will depend on the type of infection you have and how bad it is.

Always take this medicine exactly as your doctor has told you. Check with your doctor or pharmacist if you are not sure how to take Ciprofloxacin.

- To prepare the oral suspension (see the sub-section “Preparing and taking the suspension”);
- Use the measuring spoon provided with the bottle.

Dosage

Adults

The usual recommended posology of Ciprofloxacin is 250 mg to 750 mg twice daily (every 12 hours) depending on the severity and type of infection:

- 1 measuring spoonful equals to 250 mg
- 2 measuring spoonfuls equals to 500 mg
- 3 measuring spoonfuls equals to 750 mg (max dose per intake).

Children and adolescents

The doctor will calculate the correct dose for your child depending on his or her body weight, the severity and type of infection.

Doses are worked out depending on the child’s body weight in kilograms (kg).

The usual recommended dose is 10 mg to 20 mg for each kilogram of bodyweight per intake, and each dose will be taken twice daily (every 12 hours). The maximum recommended dose is 750 mg per intake.

A practical guidance with reference numbers of spoonfuls for each of the two daily administrations of Ciprofloxacin oral suspension per recommended dose in mg/kg bodyweight is given in the table below:

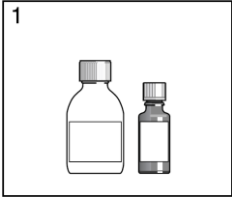
250 mg/5 mL oral suspension		
½ spoon = 125 mg ;		
1 spoon = 250 mg ;		
1 spoon + ½ spoon = 375 mg ;		
2 spoons = 500 mg ;		
2 spoons + ½ spoon = 625 mg ;		
3 spoons = 750 mg (max dose)		
Body weight (kg)	Practical guidance for each of the two daily administrations of Ciprofloxacin oral suspension per recommended dose in mg/kg bodyweight	
	10 mg/kg	20 mg/kg
9-15 kg	½ spoon	1 spoon
16-20 kg	1 spoon	1 spoon + ½ spoon
21-25 kg	1 spoon	2 spoons
26-28 kg	1 spoon	2 spoons + ½ spoon
29-31 kg	1 spoon + ½ spoon	2 spoons + ½ spoon
32-40 kg	1 spoon + ½ spoon	3 spoons
41-51 kg	2 spoons	3 spoons
52-61 kg	2 spoons + ½ spoon	3 spoons
62 kg and above	3 spoons	3 spoons

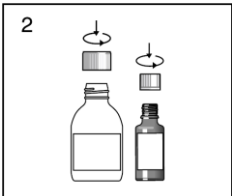
Kidney problems

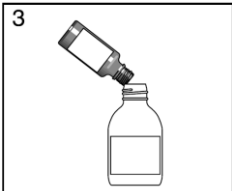
Tell your doctor if you suffer from kidney problems because your dose may need to be adjusted.

Preparing and taking the suspension

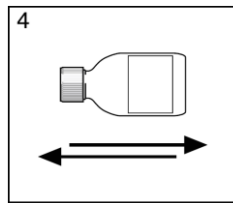
Use only after reconstitution: the small brown bottle contains granules of ciprofloxacin. Add them to the solvent in the larger white bottle

- 

The product comes in 2 bottles, a small brown bottle and a larger white bottle. The small brown bottle contains granules which you add to the solvent in the larger white bottle.
- 

Open both bottles. Press down the child-proof cap and turn it to the left.
- 

Empty the small brown bottle containing the granules into the opening of the larger white bottle with the solvent. Do not add any water to the solvent. Discard the empty small brown bottle.



4. Close the white bottle with the solvent and added granules, turn it on its side and shake vigorously for about 15 seconds.

5. Shake it vigorously for about 15 seconds before each dose.
6. Enter the expiry date after reconstitution (= reconstitution date + 14 days) in the relevant field on the white solvent bottle. The reconstituted suspension is stable for no more than 14 days even when stored in a refrigerator
7. Do try to take the suspension at around the same time every day.
8. Always use the measuring spoon provided. The full spoon will give you a dose of 250 mg Ciprofloxacin.
9. Do not chew the granules present in the suspension, simply swallow them
10. A glass of water may be taken after taking the dose.
11. You can take the suspension at mealtimes or in between meals. You can take ciprofloxacin oral suspension during meals containing dairy products (such as milk or yoghurt) or with fortified fruit juices (e.g. calcium-fortified orange juice). However, **do not** take Ciprofloxacin with dairy products (such as milk or yoghurt) or with fortified fruit-juice (e.g. calcium fortified orange-juice) when these dairy products or fortified fruit juices are taken alone outside meals.

Nevertheless, ciprofloxacin oral suspension could be administered one to two hours before or no sooner than four hours after dairy products or mineral-fortified drinks taken alone outside meals.

Remember to drink plenty of fluids while you are taking this medicine.

After use the graduated measuring spoon should be cleaned under running water with dishwashing detergent, rinsed with water and dried thoroughly afterwards with a clean paper towel. The spoon should be stored with the Ciprofloxacin 250 mg/5 mL oral suspension bottle in the outer carton.

If you take more Ciprofloxacin than you should

If you take more than the prescribed dose, get medical help immediately. If possible, take the oral suspension or the box with you to show the doctor.

If you forget to take Ciprofloxacin

If you forget to take Ciprofloxacin and it is:

- 6 hours or more until your next scheduled dose, take your missed dose right away. Then take the next dose at your regular time.
- less than 6 hours until your next scheduled dose, do not take the missed dose. Take the next dose at your regular time.

Do not take a double dose to make up for a forgotten dose. Be sure to complete your course of treatment.

If you stop taking Ciprofloxacin

It is important that you **finish the course of treatment** even if you begin to feel better after a few days. If you stop taking this medicine too soon, your infection may not be completely cured and the symptoms of the infection may return or get worse. You might also develop resistance to the antibiotic.

If you have any further questions about the use of this medicine, ask your doctor or pharmacist.

4. Possible side effects

Like all medicines, this medicine can cause side effects, although not everybody gets them.

The following section contains the most serious side effects that you can recognize yourself:

Stop taking Ciprofloxacin and contact your doctor immediately in order to consider another antibiotic treatment if you notice any of the following serious side effects:

Rare (may affect up to 1 in 1,000 people)

- Seizure (see Section 2: Warnings and precautions)

Very rare (may affect up to 1 in 10,000 people)

- Severe, sudden allergic reaction with symptoms such as tightness in the chest, feeling dizzy, sick or faint, or experience dizziness when standing up (anaphylactic reaction/shock) (see Section 2: Warnings and precautions)
- Muscle weakness, inflammation of the tendons which could lead to rupture of the tendon, particularly affecting the large tendon at the back of the ankle (Achilles tendon) (see Section 2: Warnings and precautions)
- A serious life-threatening skin rash, usually in the form of blisters or ulcers in the mouth, throat, nose, eyes and other mucous membranes such as genitals which may progress to widespread blistering or peeling of the skin (Stevens-Johnson syndrome, toxic epidermal necrolysis).

Not known (frequency cannot be estimated from the available data)

- Unusual feelings of pain, burning tingling, numbness or muscle weakness in the extremities (neuropathy) (see Section 2: Warnings and precautions)
- A drug reaction that causes rash, fever, inflammation of internal organs, hematologic abnormalities and systemic illness (DRESS Drug Reaction with Eosinophilia and Systemic Symptoms, AGEP Acute Generalised Exanthematous Pustulosis).

Other side effects which have been observed during treatment with Ciprofloxacin are listed below by how likely they are:

Common (may affect up to 1 in 10 people)

- nausea, diarrhoea
- joint pain and joint inflammation in children

Uncommon (may affect up to 1 in 100 people)

- joint pain in adults
- fungal superinfections
- a high concentration of eosinophils, a type of white blood cell
- decreased appetite
- hyperactivity or agitation
- headache, dizziness, sleeping problems, or taste disorders
- vomiting, abdominal pain, digestive problems such as stomach upset (indigestion/heartburn), or wind
- increased amounts of certain substances in the blood (transaminases and/or bilirubin)
- rash, itching, or hives
- poor kidney function
- pains in your muscles and bones, feeling unwell (asthenia), or fever
- increase in blood alkaline phosphatase (a certain substance in the blood)

Rare (may affect up to 1 in 1,000 people)

- Cases of long lasting (up to months or years) or permanent adverse drug reactions have been associated with quinolone and fluoroquinolone antibiotics. These may include tendon inflammation, tendon rupture, joint pain, pain in the limbs, difficulty in walking, abnormal sensations such as pins and needles, tingling, pricking, burning, numbness or pain (neuropathy), fatigue, sleep disorders, memory impairment, mental health effects which may include, but are not necessarily limited to, anxiety, panic attacks, confusion, or depression, as well as impairment of hearing, vision, and taste and smell. There are no medicines that have been established as being effective treatments for the symptoms of long lasting or disabling side effects associated with fluoroquinolones.
- muscle pain, inflammation of the joints, increased muscle tone and cramping
- inflammation of the bowel (colitis) linked to antibiotic use (can be fatal in very rare cases) (see Section 2: Warnings and precautions)
- changes to the blood count (leukopenia, leukocytosis, neutropenia, anaemia), increased or decreased amounts of a blood clotting factor (thrombocytes)
- allergic reaction, swelling (oedema), or rapid swelling of the skin and mucous membranes (angio-oedema) (see Section 2: Warnings and precautions)

- increased blood sugar (hyperglycaemia)
- decreased blood sugar (hypoglycaemia) (see Section 2: Warnings and precautions)
- confusion, disorientation, anxiety reactions, strange dreams, depression (potentially leading to thoughts of suicide, suicide attempts, or completed suicide) (see Section 2: Warnings and precautions), or hallucinations
- pins and needles, unusual sensitivity to stimuli of the senses, decreased skin sensitivity, tremors, or giddiness
- eyesight problems including double vision (see Section 2: Warnings and precautions)
- tinnitus, loss of hearing, impaired hearing
- rapid heartbeat (tachycardia)
- expansion of blood vessels (vasodilation), low blood pressure, or fainting
- shortness of breath, including asthmatic symptoms
- liver disorders, jaundice (cholestatic icterus), or hepatitis
- sensitivity to light (see Section 2: Warnings and precautions)
- kidney failure, blood or crystals in the urine, urinary tract inflammation
- fluid retention or excessive sweating
- increased levels of the enzyme amylase

Very rare (may affect up to 1 in 10,000 people)

- a special type of reduced red blood cell count (haemolytic anaemia); a dangerous drop in a type of white blood cells (agranulocytosis) (see Section 2: Warnings and precautions); a drop in the number of red and white blood cells and platelets (pancytopenia), which may be fatal; and bone marrow depression, which may also be fatal
- allergic reaction called serum sickness-like reaction (see Section 2: Warnings and precautions)
- mental disturbances (psychotic reactions potentially leading to thoughts of suicide, suicide attempts, or completed suicide) (see Section 2: Warnings and precautions)
- migraine, disturbed coordination, unsteady walk (gait disturbance), disorder of sense of smell (olfactory disorders), pressure on the brain (intracranial pressure and pseudotumor cerebri)
- visual colour distortions
- inflammation of the wall of the blood vessels (vasculitis)
- pancreatitis
- death of liver cells (liver necrosis) very rarely leading to life-threatening liver failure (see Section 2: Warnings and precautions)
- small, pin-point bleeding under the skin (petechiae); various skin eruptions or rashes
- worsening of the symptoms of myasthenia gravis (see Section 2: Warnings and precautions)

Not known (frequency cannot be estimated from the available data)

- syndrome associated with impaired water excretion and low levels of sodium (SIADH)
- feeling highly excited (mania) or feeling great optimism and overactivity (hypomania)
- abnormal fast heart rhythm, life-threatening irregular heart rhythm, alteration of the heart rhythm (called 'prolongation of QT interval', seen on ECG, electrical activity of the heart)
- influence on blood clotting (in patients treated with Vitamin K antagonists)
- loss of consciousness due to severe decrease in blood sugar levels (hypoglycaemic coma). See section 2.

Cases of an enlargement and weakening of the aortic wall or a tear in the aortic wall (aneurysms and dissections), which may rupture and may be fatal, and of leaking heart valves have been reported in patients receiving fluoroquinolones. See also section 2.

Reporting of side effects

If you get any side effects, talk to your doctor or pharmacist. This includes any possible side effects not listed in this leaflet. You can also report side effects directly via the Yellow Card Scheme at: www.mhra.gov.uk/yellowcard or search for MHRA Yellow Card in the **Google Play** or **Apple App Store**. By reporting side effects, you can help provide more information on the safety of this medicine.

5. How to store Ciprofloxacin

KEEP OUT OF THE SIGHT AND REACH OF CHILDREN.

Do not use this medicine after the expiry date, which is stated on the carton and bottles after "EXP": The expiry date refers to the last day of that month.

Granules:

Do not store above 25 °C.

Solvent:

Do not store above 25 °C.

Protect from freezing. Avoid inverted storage.

When reconstituted, the ready-to-use oral suspension is stable only for 14 days when stored either at ambient temperatures up to 30 °C or in a refrigerator (2 °C - 8 °C). After this time, the reconstituted oral suspension should not be taken. Protect the reconstituted oral suspension from freezing.

Do not throw away any medicines via wastewater or household waste. Ask your pharmacist how to throw away medicines you no longer use. These measures will help protect the environment.

6. Contents of the pack and other information

What Ciprofloxacin contains

The active substance is ciprofloxacin.

1 measuring spoonful (approx 5.0 mL suspension) provides approx. 250 mg ciprofloxacin.

1/2 measuring spoonful (approx 2.5 mL suspension) provides approx. 125 mg ciprofloxacin.

The other ingredients are:

Granules: hypromellose, magnesium stearate, polyacrylate dispersion 30 %, polysorbate 20, povidone.

Solvent: Soya lecithin, medium chain triglycerides, strawberry flavour (contains benzyl alcohol), sucrose, purified water.

What Ciprofloxacin looks like and contents of the pack

Granules and solvent for oral suspension.

One amber glass bottle containing 7.95 g white to slightly yellow granules and one white HDPE bottle containing 93 ml of strawberry flavoured white to slightly yellow solvent. The pack is provided with a blue plastic graduated measuring spoon.

Product Licence holder

Procured from within the EU and repackaged by the Product Licence holder: Abacus Medicine Ltd., Abbey House, 282 Farnborough Road, Farnborough, GU14 7NA, United Kingdom.

Manufacturer

This product is manufactured by Bayer HealthCare Manufacturing S.r.l., Via delle Groane, 126, Garbagnate Milanese, Milano, Italy.