

168.45

Top page

2mm corner rad

1.5 mm text to cutter clearance

Fingerlift area

**op** Chesty Cough is taken for the symptomatic relief of chesty coughs.

**300ml**

**Ingredients**  
Active ingredients: Ipecacuanha Liquid Extract 0.0098 ml and Glycerin 0.5 ml per 5 ml.

**Warnings**  
Do not use:  
• If you are allergic to any of the ingredients.  
• If you have kidney, liver or heart problems.  
• If you are in shock, are at risk of seizure or have blood circulation problems.  
• If you are pregnant or breast-feeding unless on the advice of your doctor.  
Ipecacuanha Liquid Extract may interact with antiarrhythmic drugs.  
**Contact your doctor before use:**  
• If you are taking other medicines.  
• If you have an intolerance to some sugars.  
Contains 3.2 g of sucrose per 10 ml dose. This should be taken into account in patients with diabetes mellitus. This medicinal product also contains ethanol, E123, E214, E216 and E218. See further warnings.

**Dosage**  
Liquid for oral use.  
**Adults, the elderly and children over 12 years of age:**  
Take 5 to 10 ml, 3 to 4 times daily. Not more than 4 doses should be taken in any 24 hours. Do not take more medicine than the label tells you to. If you accidentally take too much contact your nearest hospital immediately.  
Do not take with any other cough and cold medicines.  
**Not recommended for children under 12 years.**

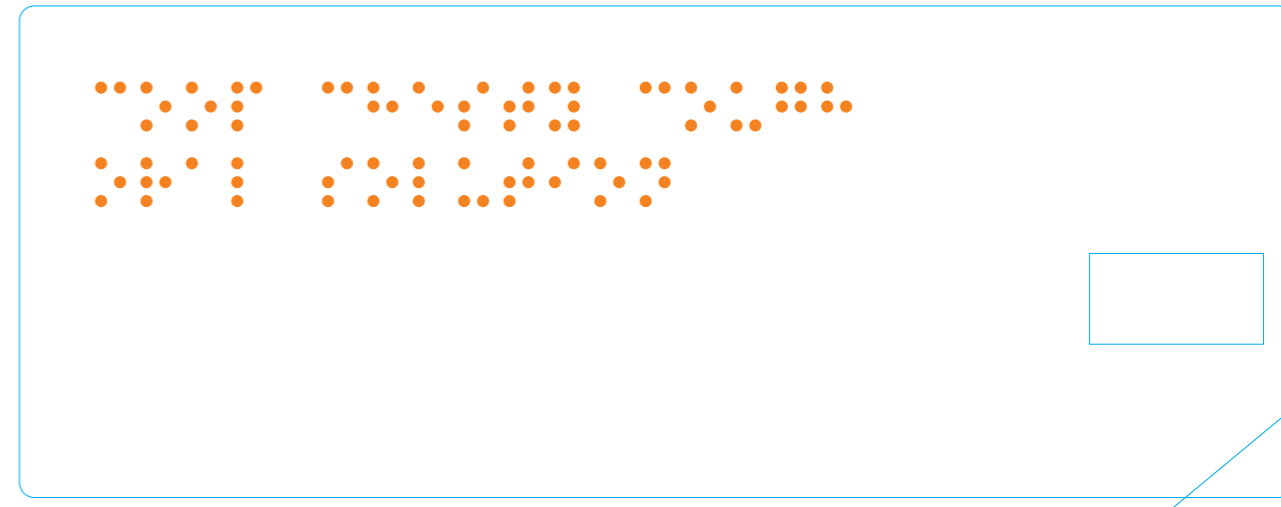
**Storage**  
**Keep out of the sight and reach of children.**  
Do not store above 25°C. Store away from direct sources of heat and sunlight.

**Manufacturer and Product Licence Holder:**  
Bell, Sons & Co. (Druggists) Ltd., Southport, PR9 9AL, UK.

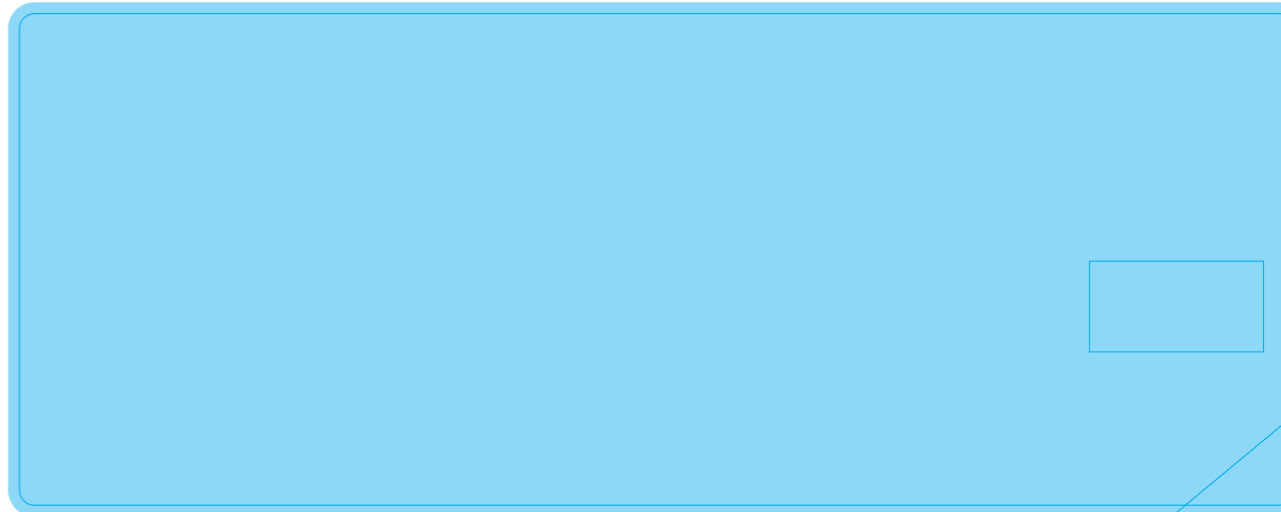
AW CODE: N28930/1/3  
5 000129 342116 >  
CT1-1062 Version B Revised June 2024

UK Only PL.03105/0056  
Peel back at tab for further important information.  
Do not remove.

Braille shown @ 100%



Matt varnish 10 GU shown @ 100%



65

Base page

2.5 mm text to hinge clearance

Minimum 20 mm text free area for hinge

<b>Further Warnings</b> This medicinal product contains small amounts of ethanol (alcohol), less than 100 mg per 10 ml dose. Contains E123 - may cause allergic reactions. Contains E214, E216 and E218 - may cause allergic reactions (possibly delayed).	<b>Reporting of side effects</b> If you get any side effects talk to your doctor, pharmacist or nurse. This includes any possible side effects not listed on this label. You can also report side effects directly via the Yellow Card Scheme at: <a href="http://www.mhra.gov.uk/yellowcard">www.mhra.gov.uk/yellowcard</a> or search for MHRA Yellow Card in the Google Play or Apple App Store. By reporting side effects you can help provide more information on the safety of this medicine.
<b>Side Effects</b> May cause indigestion, nausea, vomiting, diarrhoea and cardiac conduction abnormalities (Heart palpitations).	<b>Ingredients</b> <b>Full Ingredients List:</b> Ipecacuanha liquid extract 0.0098 ml and glycerin 0.5 ml per 5 ml, glucose, sucrose, citric acid E330, lemon oil, acetic acid E260, camphor, ethylhydroxybenzoate E214, propylhydroxybenzoate E216, methylhydroxybenzoate E218, amaranth E123, ethanol and purified water.

168.45

Top page

2mm corner rad

1.5 mm text to cutter clearance

Fingerlift area

65

**co op**

**Chesty Cough**  
Oral Solution  
Ipecacuanha Liquid Extract. Glycerin

Oral Solution. For the relief of coughs

**For symptomatic relief of chesty coughs.**

**Warnings**  
Do not use:  
• If you are allergic to any of the ingredients  
• If you have kidney, liver or heart problems  
• If you are in shock, are at risk of seizure or have blood circulation problems  
• If you are pregnant or breast-feeding unless on the advice of your doctor.  
Ipecacuanha Liquid Extract may interact with antirhythmic drugs  
Contact your doctor before use if:  
• If you are taking other medicines  
• If you have an intolerance to some sugars  
Contains 3.2g of sucrose per 10ml dose. This should be taken into account in patients with diabetes mellitus.  
This medicinal product also contains ethanol, E123, E214, E216 and E218.  
See further warnings.

**Dosage**  
Liquid for oral use.  
**Adults, the elderly and children over 12 years of age:** Take 5 to 10ml, 3 to 4 times daily. Not more than 4 doses should be taken in any 24 hours. Do not take more medicine than the label tells you to. If you accidentally take too much contact your nearest hospital immediately. Do not take with any other cough and cold medicines.  
**Not recommended for children under 12 years.**

**Ingredients**  
**Active Ingredients:** Ipecacuanha Liquid Extract 0.0098ml and Glycerin 0.5ml per 5ml.

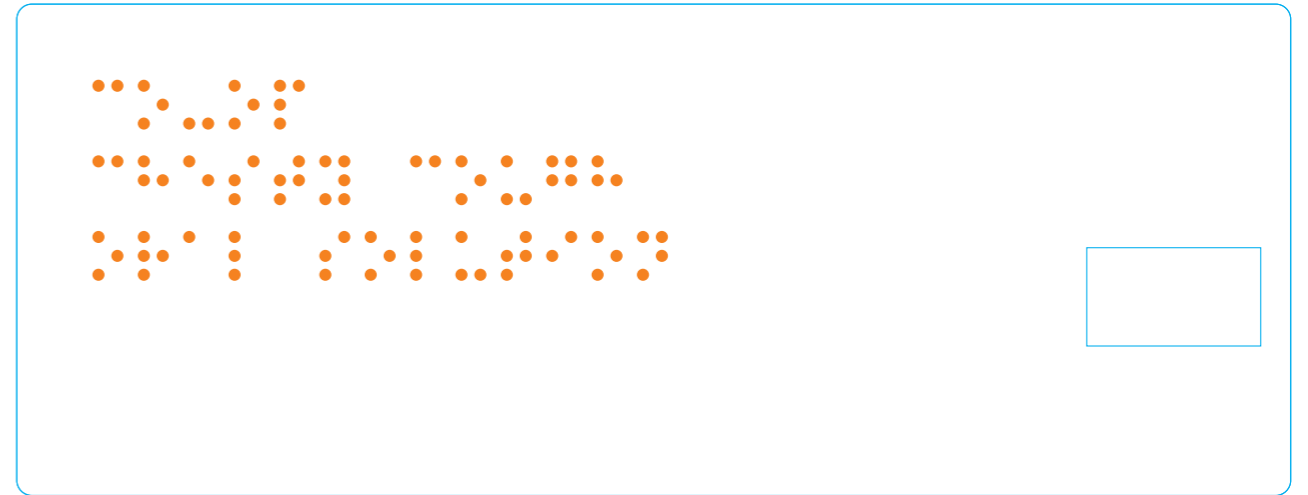
**Storage**  
**Keep out of the sight and reach of children.**  
Do not store above 25°C.  
Store away from direct sources of heat and sunlight.  
Manufacturer and Product Licence Holder:  
Bell, Sons & Co. (Druggists) Ltd.,  
Southport PR9 9AL, England.

PL03105/0056  
N28930/1/1  
Peel back at tab for further important information.  
Do not remove.

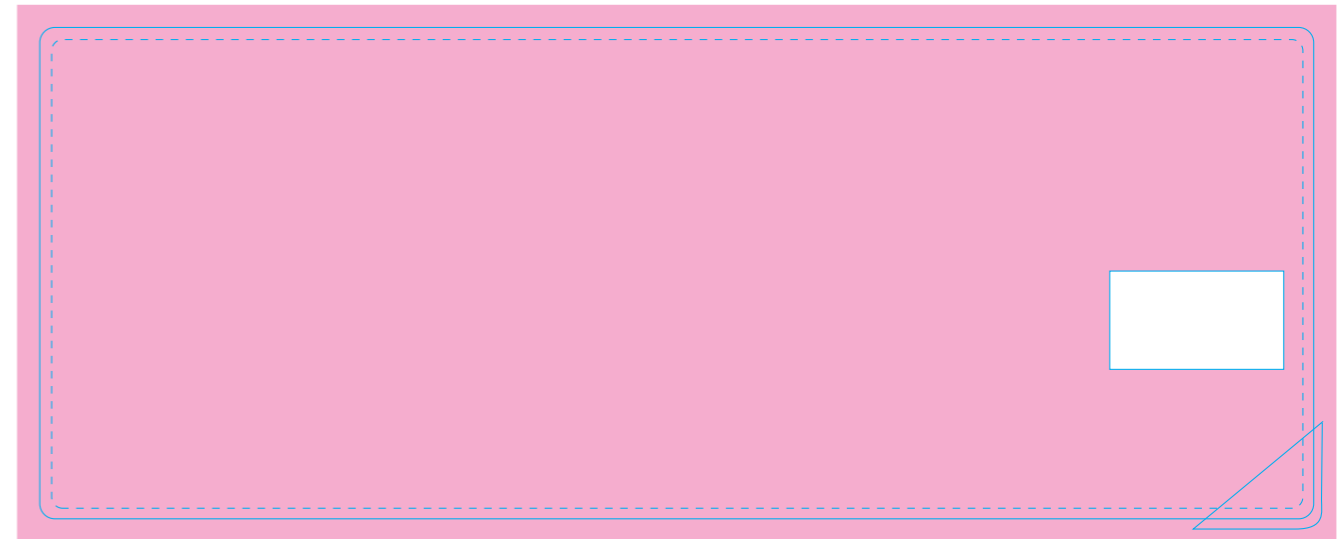
501219980  
C71-0193 Ver. A Revised November 2017

200ml

Braille shown at actual size (100%)



Matt varnish shown at actual size (100%)



**Further Warnings**

This medicinal product contains small amounts of ethanol (alcohol), less than 100mg per 10ml dose. Contains E123 - may cause allergic reactions. Contains E214, E216 and E218 - may cause allergic reactions (possibly delayed).

**Side Effects**

May cause indigestion, nausea, vomiting, diarrhoea and cardiac conduction abnormalities (Heart palpitations).

**Reporting of side effects**

If you get any side effects, talk to your doctor, pharmacist or nurse. This includes any possible side effects not listed in this label. You can also report side effects directly via the Yellow Card Scheme at: [www.mhra.gov.uk/yellowcard](http://www.mhra.gov.uk/yellowcard). By reporting side effects you can help provide more information on the safety of this medicine.

**Full Ingredients**

Ipecacuanha Liquid Extract 0.0098ml and Glycerin 0.5ml per 5ml. Glucose, Sucrose, Citric Acid E330, Lemon Oil, Acetic Acid E260, Camphor, Ethylhydroxybenzoate E214, Propylhydroxybenzoate E216, Ethanol, Methylhydroxybenzoate E218, Amaranth E123 and Purified Water.

2.5 mm text to hinge clearance

Base page

Minimum 20 mm text free area for hinge