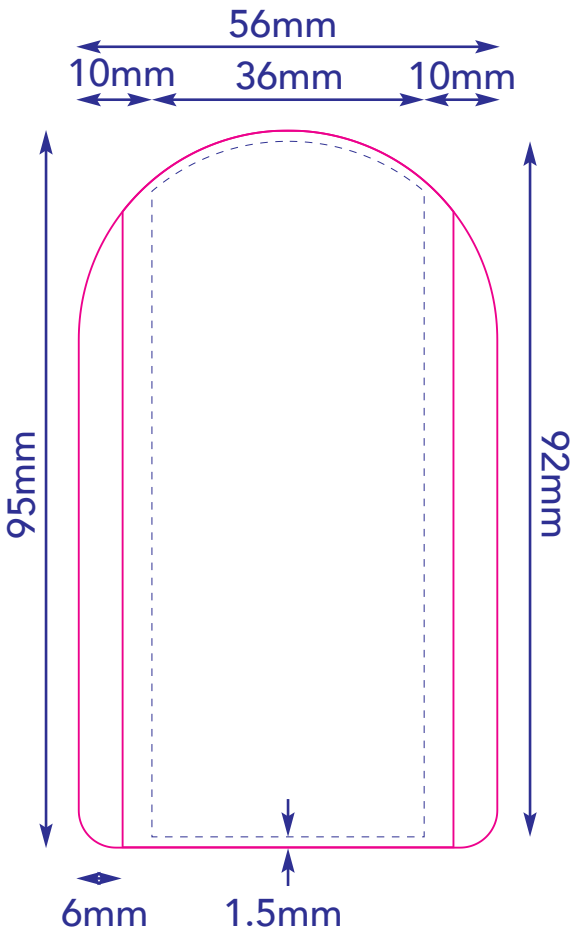
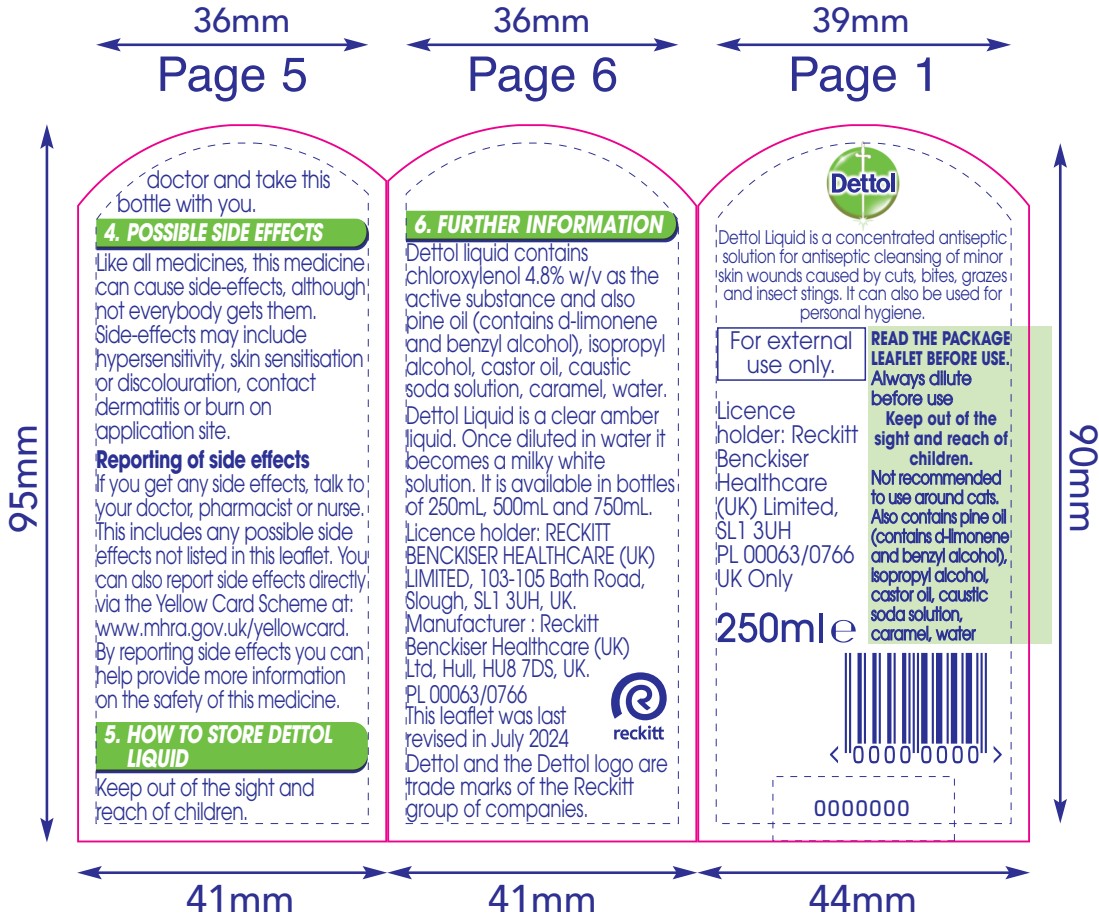


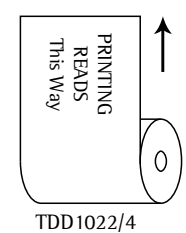
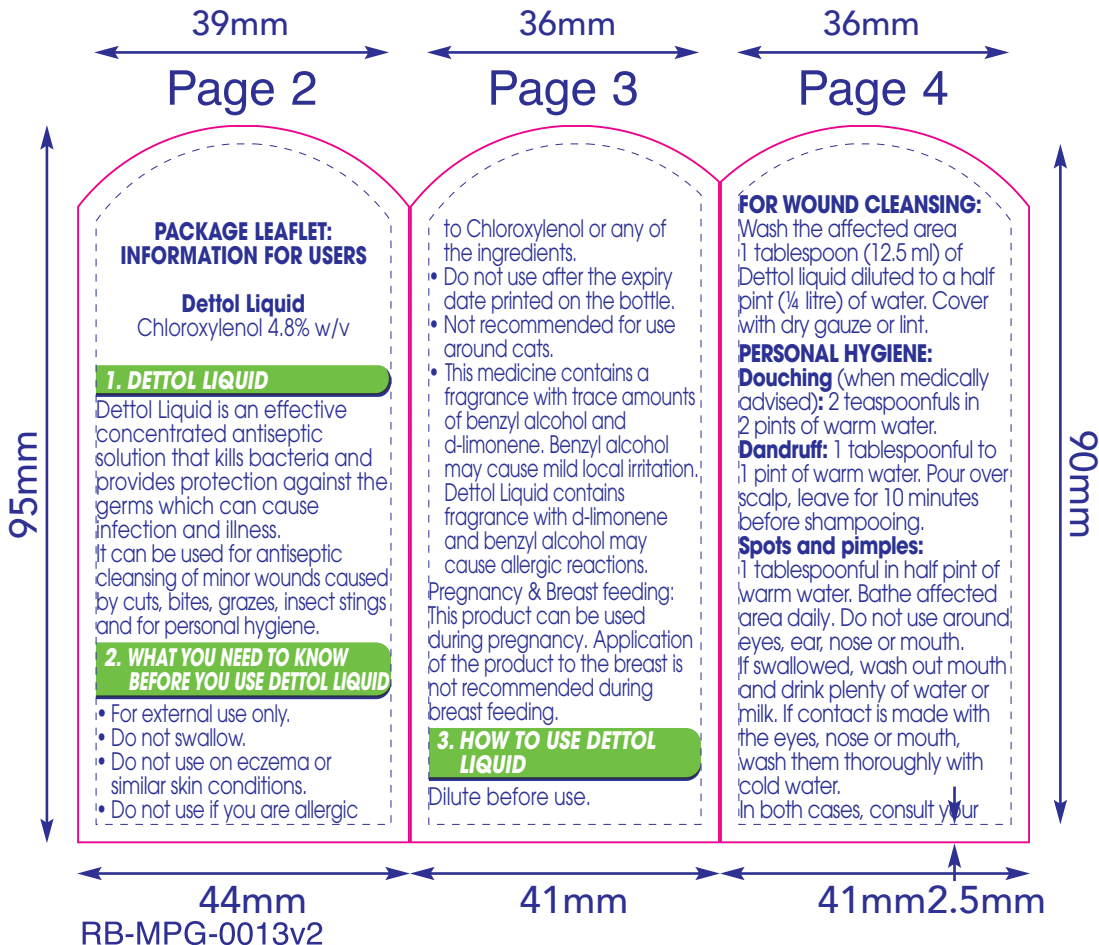
CARRIER:



LEAFLET FACE:

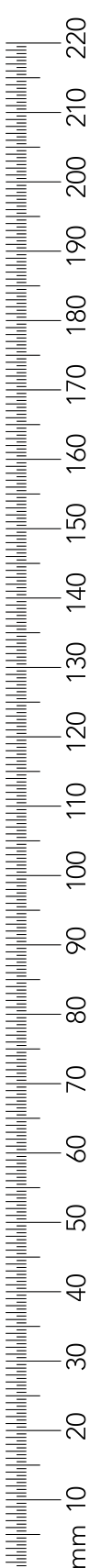


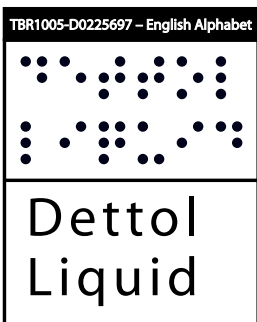
LEAFLET REVERSE:



TDD 1022/4

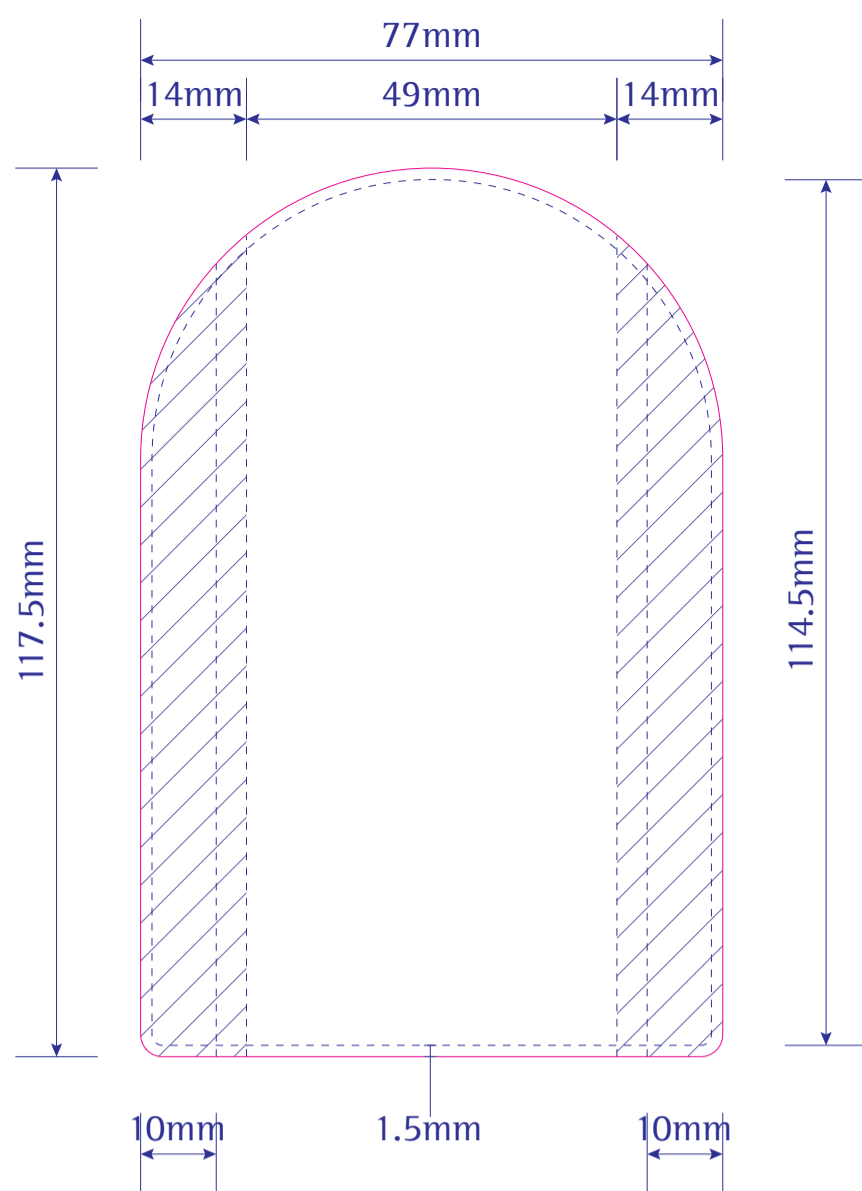
BARCODE INFO	
Barcode Type:	EAN 8
Code Value:	00000000
Magnification:	85 %
Overall Height:	14.62 mm
Bar Height:	12 mm
BWR Applied:	0 Micrometre





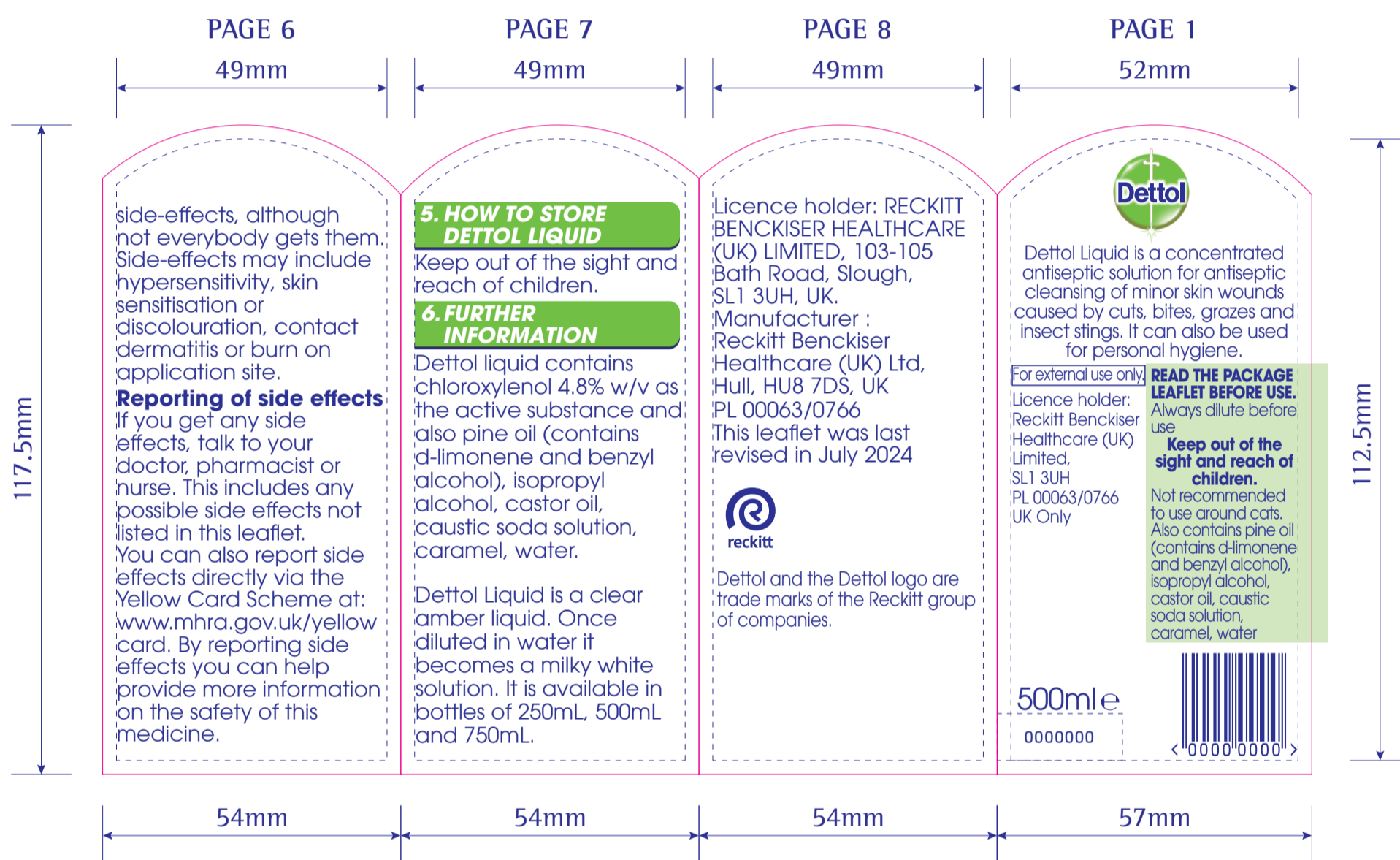


CARRIER

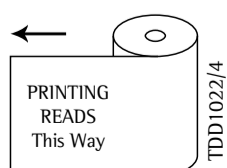
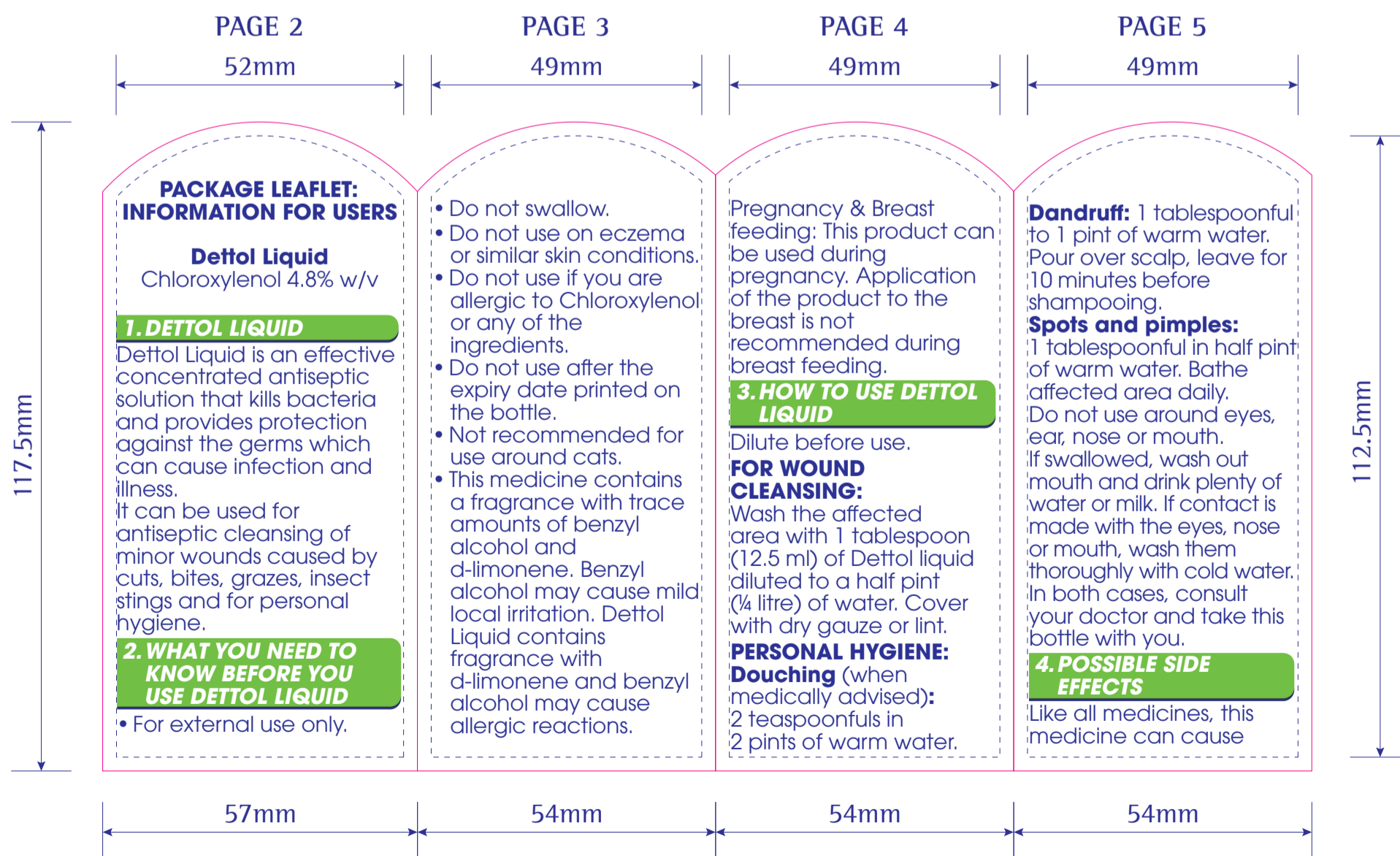


IF A COLOUR BLEEDS OFF THE FRONT PAGE, PLEASE BLEED 2MM ONTO THE BACK PAGE "8" OVER FOLD TO AVOID THE BACK PAGE COLOUR SHOWING AT THE FOLD.

LEAFLET FACE



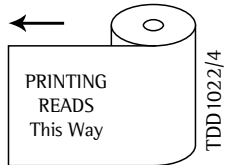
LEAFLET REVERSE



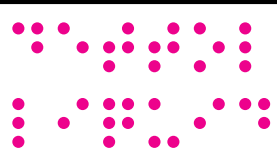
BARCODE INFO	
Barcode Type:	EAN 8
Code Value:	00000000
Magnification:	85 %
Overall Height:	18.62 mm
Bar Height:	16 mm
BWR Applied:	0 Micrometre



FRONT



Unified English Braille Code (UEB)

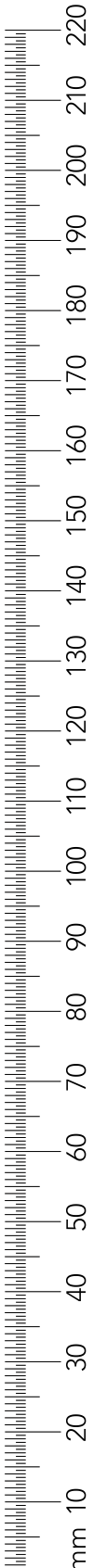
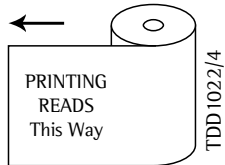


dettol
liquid

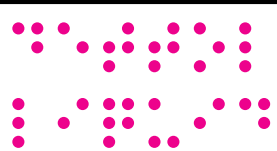
BARCODE INFO

Barcode Type:	EAN 8
Code Value:	00000000
Magnification:	90 %
Overall Height:	18.77 mm
Bar Height:	16 mm
BWR Applied:	0 Micrometre

FRONT



Unified English Braille Code (UEB)



dettol
liquid

BARCODE INFO

Barcode Type:	EAN 8
Code Value:	00000000
Magnification:	90 %
Overall Height:	18.77 mm
Bar Height:	16 mm
BWR Applied:	0 Micrometre

65mm

140mm


Dettol Liquid
Chloroxylenol 4.8% w/v


Dettol Liquid is an effective concentrated antiseptic solution that kills bacteria and protects against the germs which can cause infection and illness. It can be used for antiseptic cleansing of minor wounds caused by cuts, bites, grazes, insect stings; for dandruff, spots and pimples and if medically advised, for personal hygiene.

Do not use Dettol Liquid:

- on eczema or similar dry skin conditions
- if you are allergic to chloroxylenol or any of the other ingredients
- after the expiry date printed on the bottle.
- Do not swallow
- Not recommended for use around cats
- Always dilute before use.

This medicine contains a fragrance with trace amounts of benzyl alcohol and d-limonene. Benzyl alcohol may cause mild local irritation. Dettol Liquid contains fragrance with d-limonene and benzyl alcohol may cause allergic reactions. Pregnancy & Breast feeding: This product can be used during pregnancy. Application of the product to the breast is not recommended during breast feeding. **How to use Dettol Liquid:** Always dilute before use. **Wound cleansing:** Wash the affected area with 1 tablespoon (15ml) of Dettol liquid diluted in 1/2 pint (1/4 litre) water. Cover with dry gauze or lint. **Personal hygiene/douching:** When medically advised: Two teaspoons (10mls) in 2 pints (1L) water. **Dandruff:** One tablespoon in 1pt (1/2 L) warm water. Pour over scalp. Leave for 10 mins before shampooing. **Spots and pimples:** One tablespoon (15ml) in 1/2 pt (1/4 L) of warm water. Bathe affected area daily. Do not use around eyes, ear, nose or mouth. **If contact is made with the eyes, nose or mouth:** Wash them thoroughly with cold water. If swallowed, wash out mouth and drink plenty of water or milk. In both cases, consult a doctor and take this bottle with you. **Possible side effects:** Like all medicines, this medicine can cause side-effects, although not everybody gets them. Side-effects may include hypersensitivity, skin sensitisation or discoloration, contact dermatitis or burn on application site. **Reporting of side effects:** If you get any side effects, talk to your doctor, pharmacist or nurse. This includes any possible side effects not listed in this leaflet. You can also report side effects directly via the Yellow Card Scheme at: www.mhra.gov.uk/yellowcard. By reporting side effects you can help provide more information on the safety of this medicine. **Keep out of the sight and reach of children.** Dettol Liquid contains chloroxylenol 4.8% w/v as the active substance and pine oil (contains d-limonene and benzyl alcohol), isopropyl alcohol, caramel, water and caustic soda solution. Also contains castor oil which may cause skin reactions. PL 00063/0766 UK Only
This leaflet was last revised in July 2024
Dettol and the Dettol logo are trade marks of the Reckitt group of companies.

 **reckitt**

Licence holder:
Reckitt Benckiser Healthcare (UK) Limited 103-105 Bath Road,
Slough SL1 3UH, UK
 **Reckitt Benckiser Healthcare (UK) Limited** Hull HU8 7DS

0000000

