

Package leaflet: Information for the patient

TRELEGY ELLIPTA® 92 micrograms/55 micrograms/22 micrograms inhalation powder, pre-dispensed

fluticasone furoate/umeclidinium/vilanterol

The name of your medicine is Trelegy Ellipta 92 micrograms/55 micrograms/22 micrograms inhalation powder, pre-dispensed but will be referred to as Trelegy Ellipta throughout this leaflet.

<p>Read all of this leaflet carefully before you start using this medicine because it contains important information for you.</p> <ul style="list-style-type: none">– Keep this leaflet. You may need to read it again.– If you have any further questions, ask your doctor, pharmacist or nurse.– This medicine has been prescribed for you only. Do not pass it on to others. It may harm them, even if their signs of illness are the same as yours.– If you get any side effects, talk to your doctor, pharmacist or nurse. This includes any possible side effects not listed in this leaflet. See section 4.
--

What is in this leaflet

1. What Trelegy Ellipta is and what it is used for
2. What you need to know before you use Trelegy Ellipta
3. How to use Trelegy Ellipta
4. Possible side effects
5. How to store Trelegy Ellipta
6. Contents of the pack and other information
7. Step-by-step instructions

1. What Trelegy Ellipta is and what it is used for What Trelegy Ellipta is

Trelegy Ellipta contains three active substances called fluticasone furoate, umeclidinium bromide and vilanterol. Fluticasone furoate belongs to a group of medicines called corticosteroids, often simply called steroids. Umeclidinium bromide and vilanterol belong to a group of medicines called bronchodilators.

What Trelegy Ellipta is used for

Trelegy Ellipta is used to treat chronic obstructive pulmonary disease (**COPD**) in adults. COPD is a long-term condition characterised by breathing difficulties that slowly get worse.

In COPD the muscles around the airways tighten, making breathing difficult. This medicine widens these muscles in the lungs, reducing the swelling and irritation in the small air passages and making it easier for air to get in and out of the lungs. When used regularly, it can help to control your breathing difficulties and reduce the effects of COPD on your everyday life.



Trelegy Ellipta should be used every day and not only when you have breathing problems or other symptoms of COPD. It should not be used to relieve a sudden attack of breathlessness or wheezing. If you get this sort of attack you must use a quick-acting inhaler (such as salbutamol). If you do not have a quick-acting inhaler contact your doctor.

2. What you need to know before you use Trelegy Ellipta

Do not use Trelegy Ellipta:

- if you are allergic to fluticasone furoate, umeclidinium, vilanterol or any of the other ingredients of this medicine (listed in section 6).

Warnings and precautions

Talk to your doctor before using Trelegy Ellipta

- if you have **asthma** (Do not use Trelegy Ellipta to treat asthma)
 - if you have **heart problems** or **high blood pressure**
 - if you have **liver problems**
 - if you have **tuberculosis** (TB) **of the lung**, or **any long standing** or **untreated infections**
 - if you have an eye problem called **narrow-angle glaucoma**
 - if you have an **enlarged prostate**, **difficulty passing urine** or a **blocking in your bladder**
 - if you suffer from **epilepsy**
 - if you have **thyroid gland problems**
 - if you have **low potassium** in your blood
 - if you have a history of **diabetes**
 - if you experience blurred vision or other **visual disturbances**
- **Check with your doctor** if you think any of these may apply to you.

Immediate breathing difficulties

If you get tightness of the chest, coughing, wheezing or breathlessness immediately after using your Trelegy Ellipta inhaler:

- **stop using this medicine and seek medical help immediately**, as you may have a serious condition called paradoxical bronchospasm.

Eye problems during treatment with Trelegy Ellipta

If you get eye pain or discomfort, temporary blurring of vision, visual halos or coloured images as well as red eyes during treatment with Trelegy Ellipta:

- **stop using this medicine and seek medical help immediately**. These may be signs of an acute attack of narrow-angle glaucoma.

Infection of the lung

Because you are using this medicine for COPD, you may be at an increased risk of developing an infection of the lungs known as pneumonia. See section 4 'Possible side effects' for information on symptoms to look out for while you are using this medicine.

- **Tell your doctor as soon as possible if you develop any of these symptoms.**

Children and adolescents

Do not give this medicine to children or adolescents below the age of 18 years.

Other medicines and Trelegy Ellipta

Tell your doctor or pharmacist if you are taking, have recently taken or might take any other medicines. If you are not sure what your medicine contains talk to your doctor or pharmacist.

Some medicines may affect how this medicine works, or make it more likely to have side effects. These include:

- medicines called beta blockers (such as propranolol), to treat high blood pressure or other heart problems
 - ketoconazole or itraconazole, to treat fungal infections
 - clarithromycin or telithromycin, to treat bacterial infections
 - ritonavir or cobicistat, to treat HIV infection
 - medicines that lower the amount of potassium in your blood, such as some diuretics (water tablets) or some medicines used to treat COPD and asthma (such as methylxanthine or steroids)
 - other long-acting medicines similar to this medicine that are used to treat breathing problems, e.g. tiotropium, indacaterol. Do not use Trelegy Ellipta if you already use these medicines.
- **Tell your doctor or pharmacist** if you are taking any of these. Your doctor may wish to monitor you carefully if you are taking any of these medicines as they may increase the side effects of Trelegy Ellipta.

Pregnancy and breast-feeding

If you are pregnant or breast-feeding, think you may be pregnant or are planning to have a baby, ask your doctor for advice before taking this medicine. Do not use this medicine if you are pregnant unless your doctor tells you that you can.

It is not known whether the ingredients of this medicine can pass into breast milk. If you are breast-feeding, you must check with your doctor before you use Trelegy Ellipta. Do not use this medicine if you are breast-feeding unless your doctor tells you that you can.

Driving and using machines

It is unlikely that this medicine will affect your ability to drive or use machines.

Trelegy Ellipta contains lactose

If you have been told by your doctor that you have an intolerance to some sugars, contact your doctor before using this medicine.

3. How to use Trelegy Ellipta

Always use this medicine exactly as your doctor has told you. Check with your doctor or pharmacist if you are not sure.

The **recommended dose** is one inhalation every day at the same time of day. You only need to inhale once a day because the effect of this medicine lasts for 24 hours.

Do not use more than your doctor tells you to use.

Use Trelegy Ellipta regularly

It is very important that you use Trelegy Ellipta every day, as instructed by your doctor. This will help to keep you free of symptoms throughout the day and night.

Trelegy Ellipta should **not** be used to relieve a **sudden attack of breathlessness or wheezing**. If you get this sort of attack you must use a quick-acting reliever inhaler (such as salbutamol).

How to use the inhaler

See '*Step-by-step instructions*' at the end of this leaflet for full information. Trelegy Ellipta is for inhalation use. Once the tray is opened Trelegy Ellipta is ready to use.

If your symptoms do not improve

If your COPD symptoms (breathlessness, wheezing, cough) do not improve or get worse, or if you are using your quick-acting inhaler more often:

- **contact your doctor as soon as possible.**

If you use more Trelegy Ellipta than you should

If you accidentally use too much of this medicine, **contact your doctor or pharmacist for advice immediately** as you may need medical attention. If possible, show them the inhaler, the package or this leaflet. You may notice that your heart is beating faster than usual, you feel shaky, you have visual disturbances, have a dry mouth, or have a headache.

If you forget to use Trelegy Ellipta

Do not inhale a double dose to make up for a forgotten dose. Just inhale your next dose at the usual time. If you become wheezy or breathless, use your quick-acting inhaler (such as salbutamol), then seek medical advice.

If you stop using Trelegy Ellipta

Use this medicine for as long as your doctor recommends. Do not stop unless your doctor advises you to, even if you feel better, as your symptoms may get worse.

If you have any further questions on the use of this medicine, ask your doctor, pharmacist or nurse.

4. Possible side effects

Like all medicines, this medicine can cause side effects, although not everybody gets them.

Allergic reactions

Allergic reactions to Trelegy Ellipta are rare (they may affect up to 1 in 1,000 people).

If you have any of the following symptoms after taking Trelegy Ellipta, **stop using it** and **tell your doctor** immediately:

- skin rash or redness, hives (*urticaria*)
- swelling, sometimes of the face or mouth (*angioedema*)
- wheezing, coughing or having difficulty in breathing
- suddenly feeling weak or light headed (may lead to collapse or loss of consciousness)

Immediate breathing difficulties

If your breathing or wheezing gets worse straight after using this medicine, **stop using it** and **get medical help** immediately.

Pneumonia (infection of the lung) in COPD patients (common side effect)

Tell your doctor if you have any of the following while using Trelegy Ellipta – these could be symptoms of a lung infection:

- fever or chills
- increased mucus production, change in mucus colour
- increased cough or increased breathing difficulties

Other side effects

Common (may affect up to 1 in 10 people)

- sore, raised patches in the mouth or throat caused by a fungal infection (candidiasis). Rinsing your mouth out with water immediately after using Trelegy Ellipta may help prevent this side effect.
- infection of the nose, sinuses or throat
- infection of the upper airways
- itchy, runny or blocked nose
- pain in the back of the mouth and throat
- inflammation of the sinuses
- inflammation of the lungs (*bronchitis*)
- flu (*influenza*)
- common cold
- headache
- cough
- painful and frequent urination (may be signs of a urinary tract infection)
- joint pain
- back pain
- constipation.

Uncommon (may affect up to 1 in 100 people)

- irregular heart beat
- faster heart beat
- hoarseness
- weakening of the bones, leading to fractures
- dry mouth
- taste disturbance
- blurred vision
- increased eye pressure
- eye pain.

Rare (may affect up to 1 in 1,000 people)

- allergic reactions (see earlier in Section 4)
- difficulties passing urine (urinary retention)
- pain or discomfort passing urine (*dysuria*)
- awareness of heartbeat (palpitations)
- anxiety
- tremor
- muscle spasms
- increased in blood sugar (hyperglycaemia)

Reporting of side effects

If you get any side effects, talk to your doctor, pharmacist or nurse. This includes any possible side effects not listed in this leaflet. You can also report side effects directly via the Yellow Card Scheme website: www.mhra.gov.uk/yellowcard or search for MHRA Yellow Card in the **Google Play** or **Apple App Store**. By reporting side effects you can help provide more information on the safety of this medicine.

5. How to store Trelegy Ellipta

Keep this medicine out of the sight and reach of children.

Do not use this medicine after the expiry date which is stated on the carton, tray and inhaler after 'EXP'. The expiry date refers to the last day of that month.

Do not store above 30°C.

Keep the inhaler inside the sealed tray in order to protect from moisture and only remove immediately before first use. Once the tray is opened, the inhaler can be used for up to 6 weeks, starting from the date of opening the tray. Write the date the inhaler should be thrown away on the label in the space provided. The date should be added as soon as the inhaler has been removed from the tray.

If stored in a refrigerator, allow the inhaler to return to room temperature for at least one hour before use.

If your inhaler shows any signs of deterioration or if it doesn't work properly, please contact your pharmacist who will advise you on what to do.

Do not throw away any medicines via wastewater or household waste. Ask your pharmacist how to throw away medicines you no longer use. These measures will help protect the environment.

6. Contents of the pack and other information

What Trelegy Ellipta contains

The active substances are fluticasone furoate, umeclidinium bromide and vilanterol.

Each single inhalation provides a delivered dose (the dose leaving the mouthpiece) of 92 micrograms of fluticasone furoate, 65 micrograms umeclidinium bromide equivalent to 55 micrograms umeclidinium and 22 micrograms of vilanterol (as trifenate).

The other ingredients are lactose monohydrate (see section 2 under 'Trelegy Ellipta contains lactose') and magnesium stearate.

What Trelegy Ellipta looks like and contents of the pack

Trelegy Ellipta is an inhalation powder, pre-dispensed.

The Ellipta inhaler consists of a light grey plastic body, a beige coloured mouthpiece cover and a dose counter. It is packaged in a foil laminate tray with a peelable foil lid. The tray contains a desiccant sachet, to reduce moisture in the packaging.

The active substances are present as a white powder in separate blister strips inside the inhaler.

Trelegy Ellipta is available in packs of 1 inhaler containing 30 doses (30 day supply).

Product Licence Holder and Manufacturer

Procured from within the EU by the Product Licence holder Orifarm UK Ltd., Ground Floor Suite A2, Breakspear Park, Breakspear Way, Hemel Hempstead, HP2 4TZ, UK
For any information about this medicine, please contact the Product Licence Holder on www.orifarm.com/uk
Or phone: (+44) 1923 204333

Repacked by Orifarm Supply s.r.o., Palouky 1366, 253 01 Hostivice, Czech Republic

Manufactured by Glaxo Wellcome Production, Zone Industrielle No.2, 23 Rue Lavoisier, 2700 Evreux, France

**TRELEGY ELLIPTA 92 micrograms/55 micrograms/22 micrograms inhalation powder, pre-dispensed
PL 45985/1022**

POM

Leaflet revision date: 26/02/2025

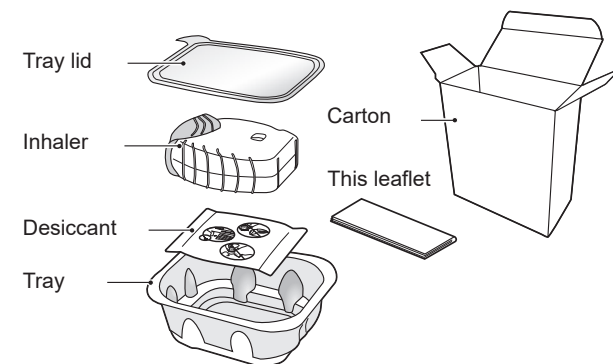
Blind or partially sighted?
Is this leaflet hard to see or read?
Call +45 63 95 27 00
to obtain the leaflet in a format suitable for you.

Step-by-step instructions

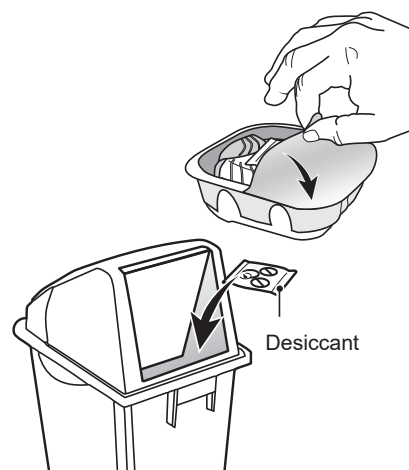
What is the inhaler?

The first time you use Trelegy Ellipta you do not need to check that the inhaler is working properly; it contains previously measured doses and is ready to use straight away.

Your Trelegy Ellipta inhaler carton contains



The inhaler is packaged in a tray. **Do not open the tray until you are ready to inhale a dose of your medicine.** When you are ready to use your inhaler, peel back the lid to open the tray. The tray contains a desiccant sachet, to reduce moisture. Throw this desiccant sachet away — **do not** open, eat or inhale it.



When you take the inhaler out of the sealed tray, it will be in the 'closed' position. **Do not open the inhaler until you are ready to inhale a dose of medicine.** Write the "Discard by" date on the inhaler label and the carton in the space provided. The "Discard by" date is 6 weeks from the date you open the tray. **After this date the inhaler should no longer be used.** The tray can be discarded after first opening.

If stored in a refrigerator, allow the inhaler to return to room temperature for at least one hour before use.

The step-by-step instructions for use of the inhaler provided below can be used for either the 30-dose (30-day supply) or the 14-dose (14-day supply) Ellipta inhaler.

1. Read this before you start

If you open and close the cover without inhaling the medicine, you will lose the dose.

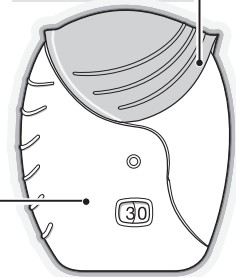
- The lost dose will be securely held inside the inhaler, but it will no longer be available. It is not possible to accidentally take extra medicine or a double dose in one inhalation.

Dose counter

This shows how many doses of medicine are left in the inhaler. **Before the inhaler has been used, it shows exactly 30 doses.** It counts down by 1 each time you open the cover. **When fewer than 10 doses are left, half of the dose counter shows red.** After you have used the last dose, **half of the dose counter shows red and the number 0 is displayed.** Your inhaler is now empty. If you open the cover after this, the dose counter will change from half red to completely red.

Cover

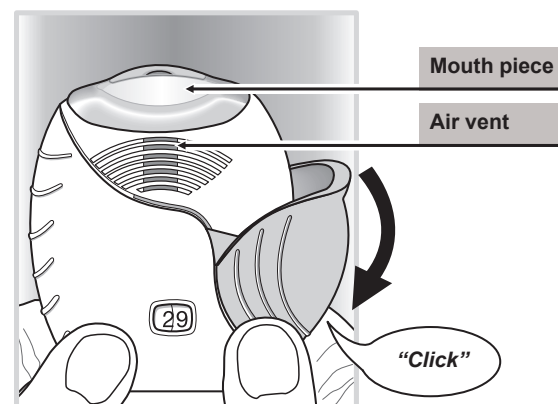
Each time you open this, you prepare one dose of medicine.



For the 14-dose inhaler, the dose counter will also show half red when there are fewer than 10 doses left, and then will show half red with the number 0 after the last dose is used. The dose counter will appear completely red if the cover is opened again.

2. Prepare a dose

- ⚠ Wait to open the cover until you are ready to take your dose. **Do not shake the inhaler.**
- ▶ Slide the cover down until you hear a "click".

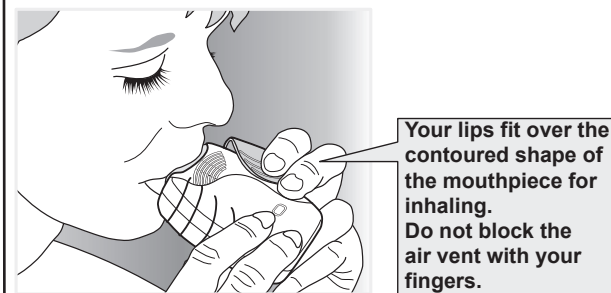


Your medicine is now ready to be inhaled. The dose counter counts down by 1 to confirm.

- If the dose counter does not count down as you hear the "click", the inhaler will not deliver medicine. Take it back to your pharmacist for advice.
- Do not shake the inhaler at any time.

3. Inhale your medicine

- ▶ While holding the inhaler away from your mouth, breathe out as far as is comfortable. **Do not** breathe out into the inhaler.
- ▶ Put the mouthpiece between your lips, and close your lips firmly around it. **Do not** block the air vent with your fingers.

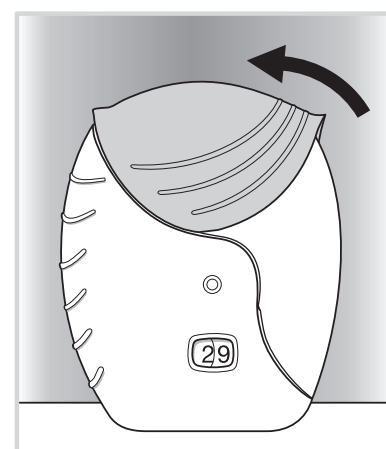


- ▶ Take one long, steady, deep breath in. Hold this breath in for as long as possible (at least 3-4 seconds).
- ▶ Remove the inhaler from your mouth.
- ▶ Breathe out slowly and gently.

- You may not be able to taste or feel the medicine, even when you are using the inhaler correctly.
- If you want to clean the mouthpiece, use a dry tissue, before you close the cover.

4. Close the inhaler and rinse your mouth

- ▶ Slide the cover upwards as far as it will go, to cover the mouthpiece.



- ▶ Rinse your mouth with water after you have used the inhaler, do not swallow.

This will make it less likely that you will develop a sore mouth or throat as side effects.